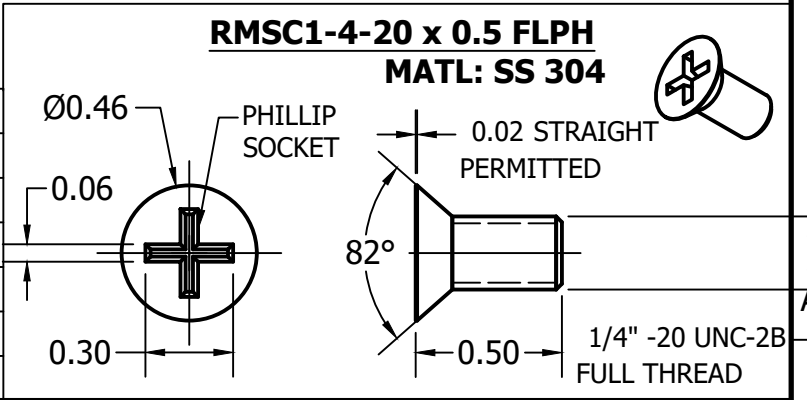


PART LIST			
S.NO	DESCRIPTION	QUANTITY	MATERIAL/REMARKS
1	PC FULL FLANGE	2	POLYCARBONATE
2	1/4 " - 20 UNC X 0.5 (L) C'SK SCREW	4	STAINLESS STEEL 304
3	INSTALLATION INSTRUCTIONS	1	SEALED IN POUCH

VARIANT	A	B	CD	D	E	F
06	4.89	3.25	3.64	0.18	0.625	0.875
08	6.89	3.25	5.64	0.18	0.625	0.875
10	8.88	3.25	7.63	0.18	0.625	0.875
12	10.89	3.25	9.64	0.18	0.625	0.875
14	12.89	3.25	11.64	0.18	0.625	0.875
16	14.89	3.25	13.64	0.18	0.625	0.875



PC FULL FLANGE
MATERIAL : POLYCARBONATE
GRADE : LEXAN 943A
COLOR : PANTONE 7541 C

THIS DRAWING IS THE SOLE AND EXCLUSIVE
PROPERTY OF ROBROY ENCLOSURES.
NO PART OF THIS DRAWING MAY BE
REPRODUCED, DISTRIBUTED, OR PUBLICALLY
DISPLAYED IN ANY FORM OR BY ANY MEANS
WITHOUT THE EXPRESS WRITTEN
PERMISSION OF ROBROY ENCLOSURES.
ALL RIGHTS RESERVED
UNDER THE COPYRIGHT LAWS.
COPYRIGHT © 2019 ROBROY ENCLOSURES

SPECIAL REQUIREMENTS

- CONTACT ENGINEERING FOR
FIRST RUN INSPECTION
- FREE FROM FLASH /CRACKS
- REFER 3D DATA

NEMA 250: TYPE -
IEC 60529: -
COLOR: GLACIER GRAY
COLOR STANDARD: PANTONE 7541C

STANDARD P/N:

CUSTOMER DWG:

ALL DIMENSIONS ARE IN INCHES
UNLESS OTHERWISE SPECIFIED

TOLERANCES
UNLESS SPECIFIED .XX .XXX
± 0.03 ± 0.010

REVISION TABLE			
REV	DESCRIPTION	DATE	ENG



Robroy Enclosures
500 Maple Street
Belding, Michigan 48809
Phone: 616-794-0700
Fax: 616-749-3378

DRAWN BY DEVI	DATE 10/31/22	CUSTOMER	DWG MFK8
SCALE DO NOT SCALE	DESCRIPTION PC FULL FLANGE	PART NUMBER MFK8	