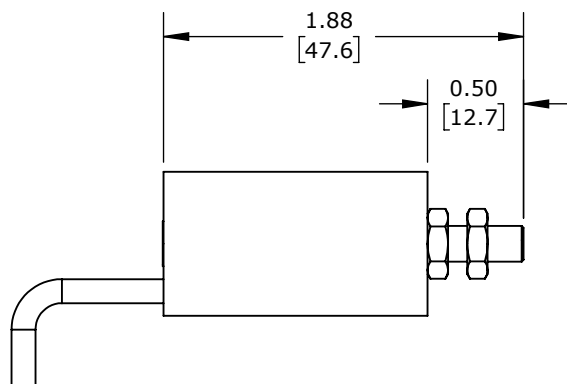
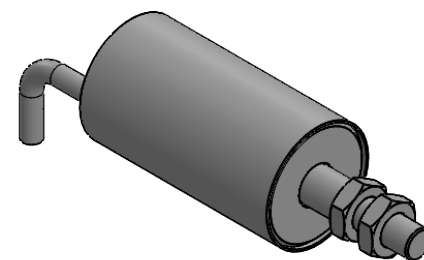
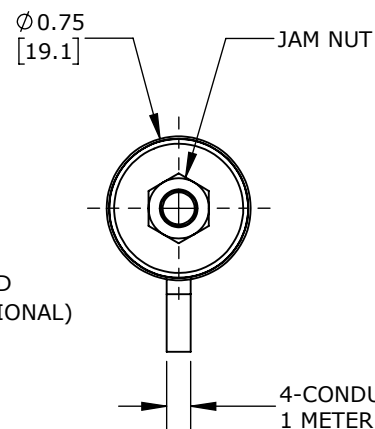


EXTENDED VIEW



RETRACTED VIEW



ISOMETRIC VIEW

ALLIANCE SENSORS INDUCTIVE LINEAR POSITION SENSOR, SLIDE, 6.4MM STROKE, 5.2MM SHAFT DIAMETER, 4-20 MA OUTPUT, 19MM DIAMETER X 35MM BODY, M5 X 0.8 MOUNT, PIGTAIL, 3.2FT/1M CABLE LENGTH.

**LZI19-6.4A-00-20S**

AutomationDirect.com  
1-800-633-0405



3rd  
ANGLE

NOT TO  
SCALE

PART DIMENSIONS MAY DIFFER SLIGHTLY  
DUE TO MANUFACTURER'S VARIANCES

METRIC UNITS USED  
FOR PART DESIGN

UNLESS OTHERWISE  
SPECIFIED UNITS ARE:

**inch**  
**[mm]**

LATEST VERSION  
3/22/2022

SHEET 1 OF 1