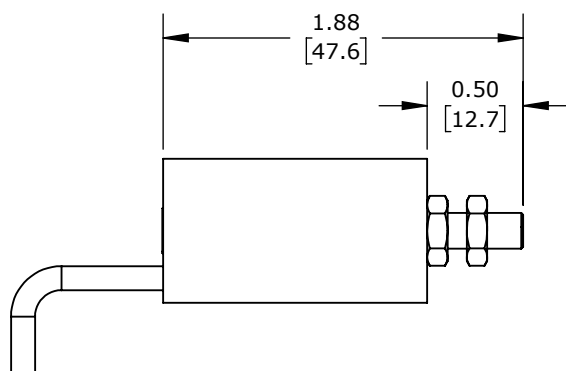
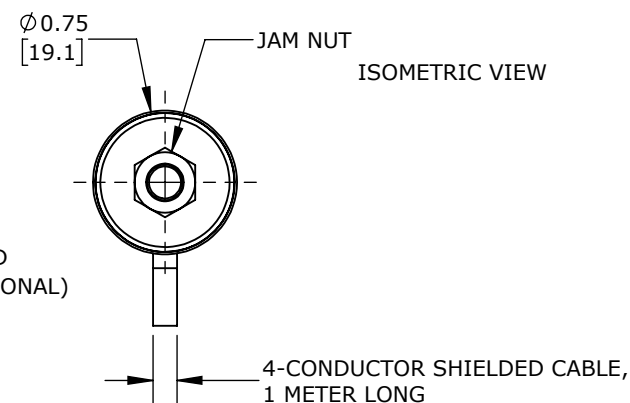
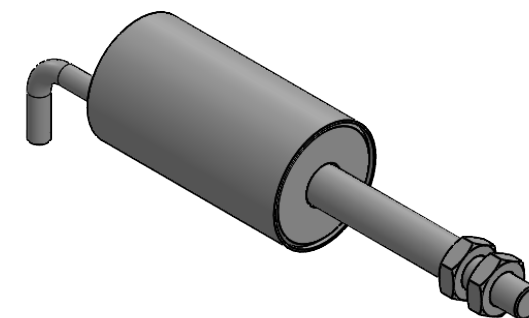


EXTENDED VIEW



RETRACTED VIEW



ALLIANCE SENSORS INDUCTIVE LINEAR POSITION SENSOR, SLIDE, 25MM STROKE, 5.2MM SHAFT DIAMETER, 4-20 MA OUTPUT, 19MM DIAMETER X 35MM BODY, M5 X 0.8 MOUNT, PIGTAIL, 3.2FT/1M CABLE LENGTH.

LZI19-025A-00-20S

AutomationDirect.com
1-800-633-0405



3rd
ANGLE

NOT TO
SCALE

PART DIMENSIONS MAY DIFFER SLIGHTLY
DUE TO MANUFACTURER'S VARIANCES

METRIC UNITS USED
FOR PART DESIGN

UNLESS OTHERWISE
SPECIFIED UNITS ARE:

inch
[mm]

LATEST VERSION
3/22/2022

SHEET 1 OF 1