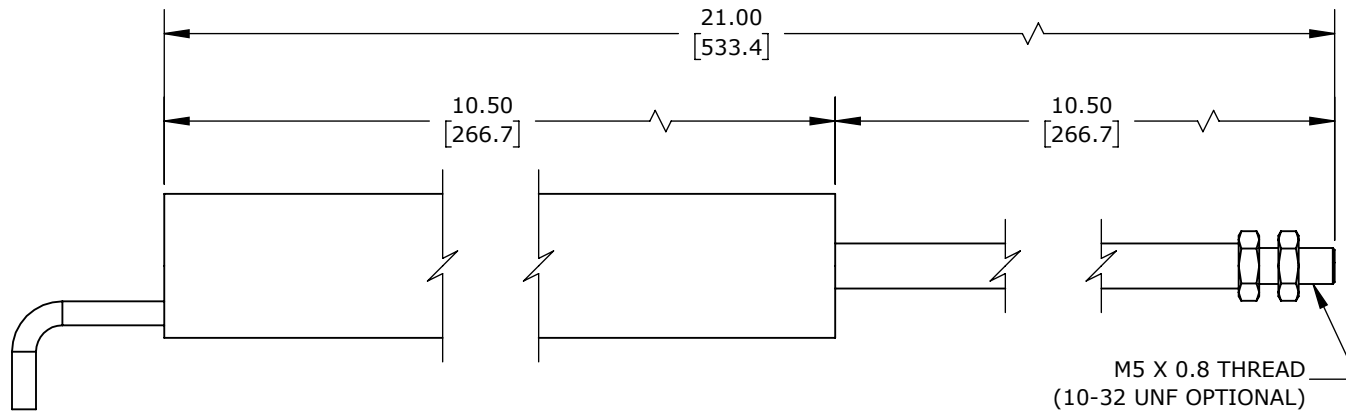
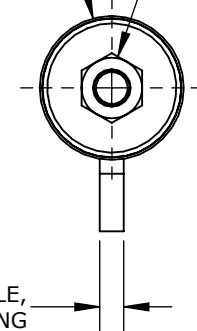


ISOMETRIC VIEW

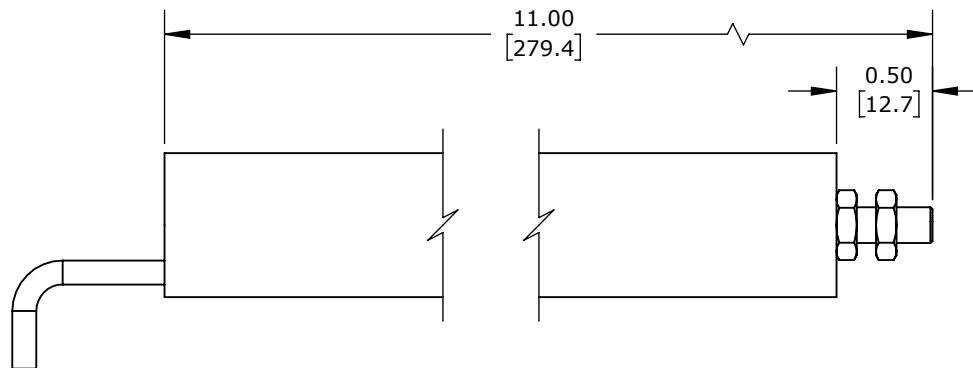


EXTENDED VIEW

Ø 0.75
[19.1] JAM NUT



4-CONDUCTOR SHIELDED CABLE,
1 METER LONG



RETRACTED VIEW

ALLIANCE SENSORS INDUCTIVE LINEAR POSITION SENSOR, SLIDE, 250MM STROKE, 5.2MM SHAFT DIAMETER, 0-10 VDC OUTPUT, 19MM DIAMETER X 266.7MM BODY, M5 X 0.8 MOUNT, PIGTAIL, 3.2FT/1M CABLE LENGTH.

LZE19-250A-00-10S

AutomationDirect.com
1-800-633-0405



3rd
ANGLE

NOT TO
SCALE

PART DIMENSIONS MAY DIFFER SLIGHTLY
DUE TO MANUFACTURER'S VARIANCES

METRIC UNITS USED
FOR PART DESIGN

UNLESS OTHERWISE
SPECIFIED UNITS ARE:

inch
[mm]

LATEST VERSION
3/22/2022

SHEET 1 OF 1