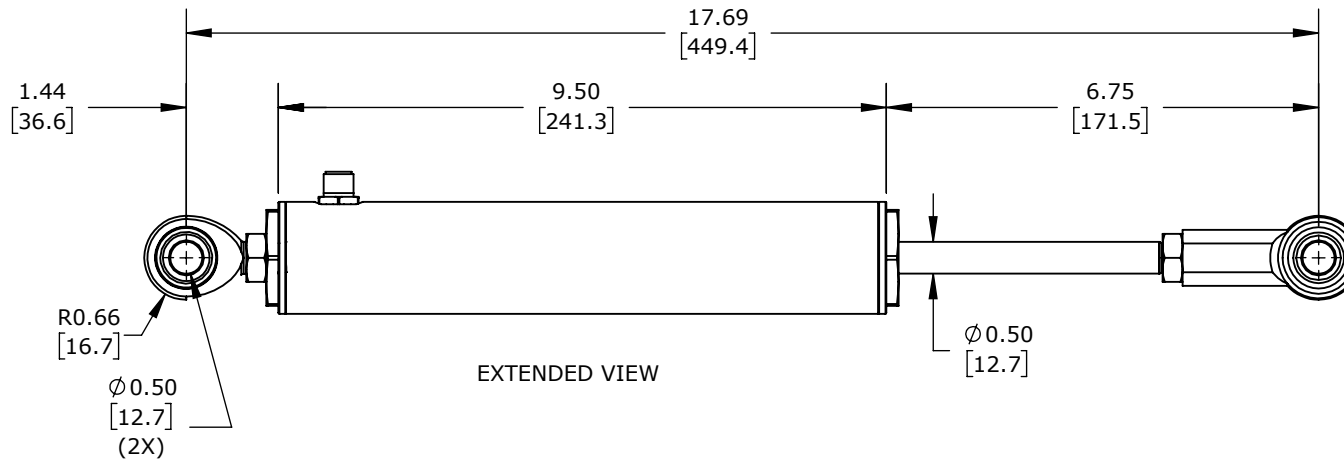
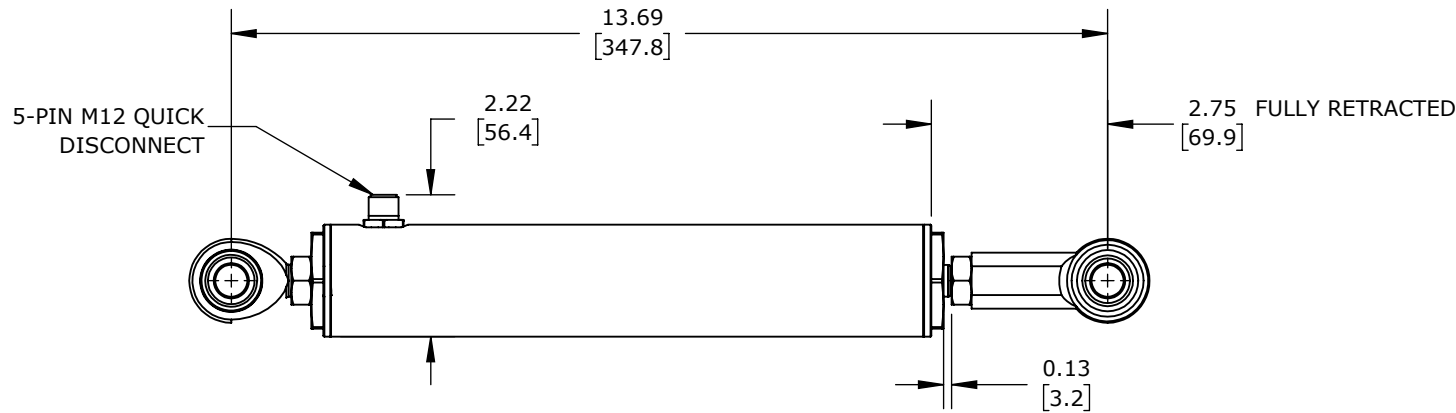
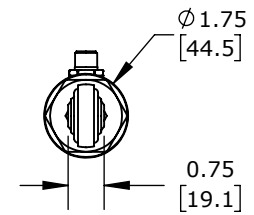


ISOMETRIC VIEW



EXTENDED VIEW



RETRACTED VIEW

ALLIANCE SENSORS INDUCTIVE LINEAR POSITION SENSOR, SLIDE, 100MM STROKE, 12.5MM SHAFT DIAMETER, 0-10 VDC OUTPUT, 45MM DIAMETER X 250.9MM BODY, ROD EYES MOUNT, 5-PIN M12 QUICK-DISCONNECT.

**LVE45-100R-01-10S**

AutomationDirect.com  
1-800-633-0405



3rd  
ANGLE

NOT TO  
SCALE

PART DIMENSIONS MAY DIFFER SLIGHTLY  
DUE TO MANUFACTURER'S VARIANCES

METRIC UNITS USED  
FOR PART DESIGN

UNLESS OTHERWISE  
SPECIFIED UNITS ARE:

**inch**  
**[mm]**

LATEST VERSION  
3/22/2022

SHEET 1 OF 1