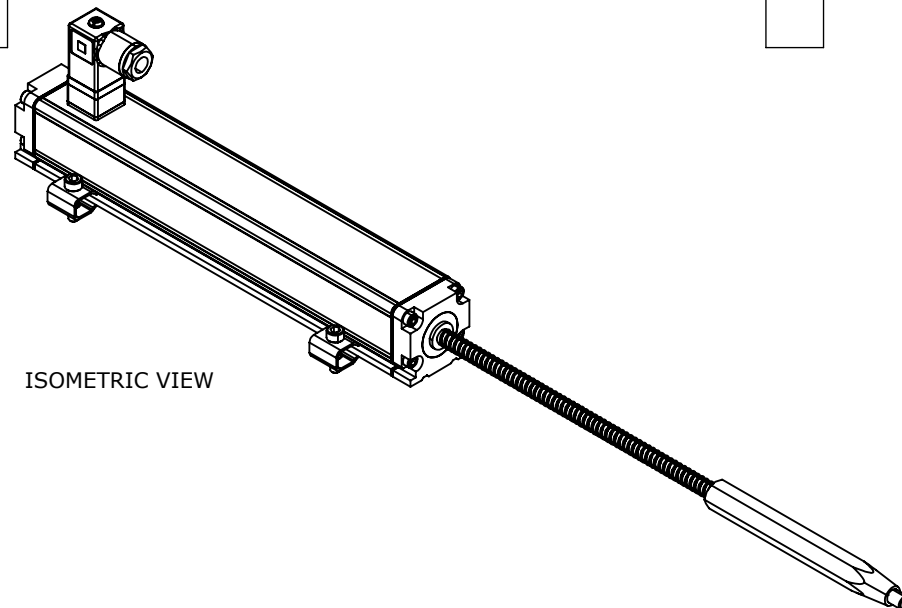
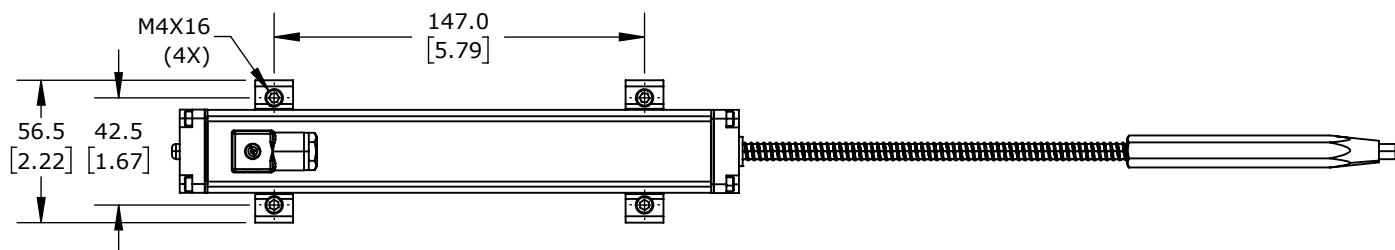


TECHNICAL SPECIFICATIONS

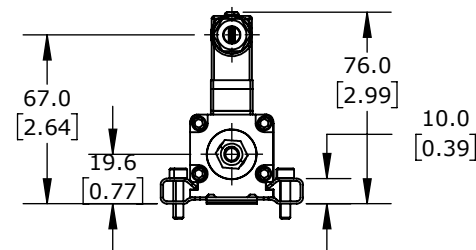
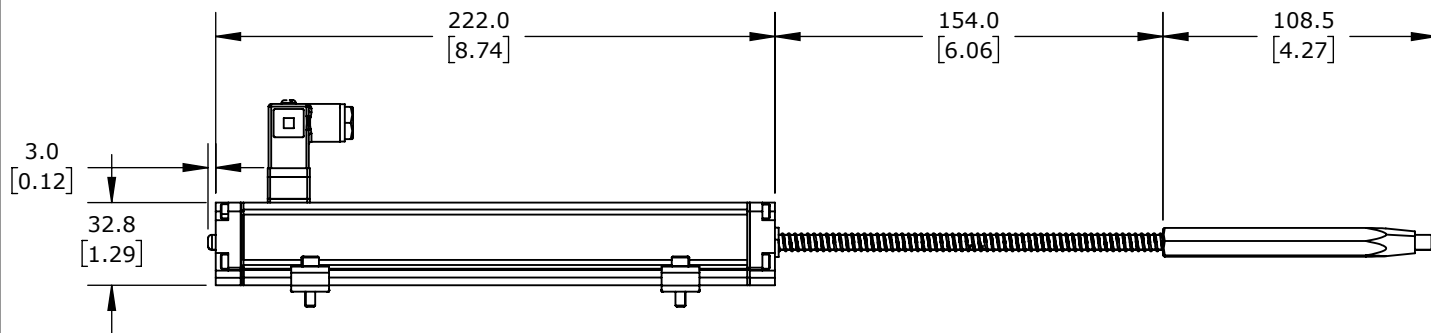
SLPC [MM]	30
US [USEFUL STROKE]	30
MS [MECHANICAL STROKE]	34
L [TOTAL STROKE]	169



ISOMETRIC VIEW



MECHANICAL STROKE



PROSENSE POTENTIOMETER LINEAR POSITION SENSOR, SPRING LOADED SLIDE, 150MM STROKE, 33 X 33 X 247MM BODY, CHANNEL MOUNT, 8MM DIN 43650 FORM C.

LSSR-33P-0150-B5-C2

AutomationDirect.com
1-800-633-0405



3rd
ANGLE

NOT TO
SCALE

PART DIMENSIONS MAY DIFFER SLIGHTLY
DUE TO MANUFACTURER'S VARIANCES

METRIC UNITS USED
FOR PART DESIGN

UNLESS OTHERWISE
SPECIFIED UNITS ARE:

mm
[inch]

LATEST VERSION
1/14/2025

SHEET 1 OF 1