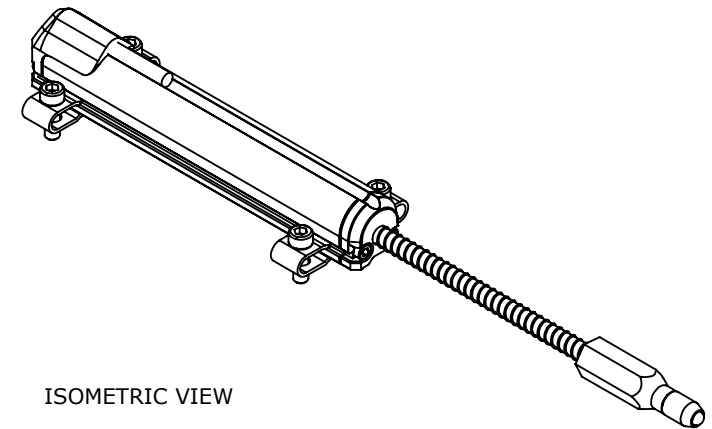
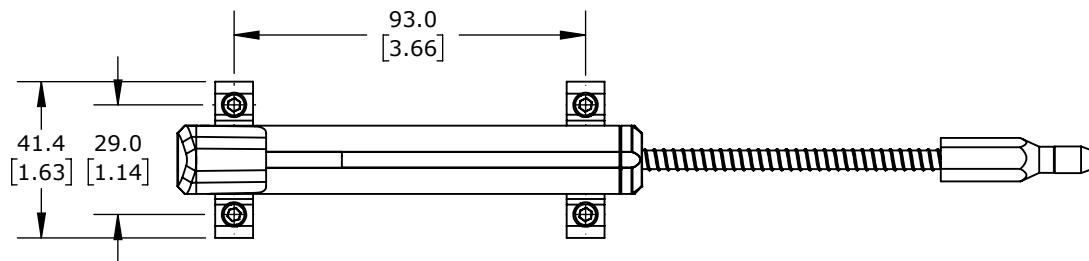
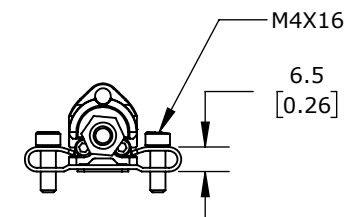
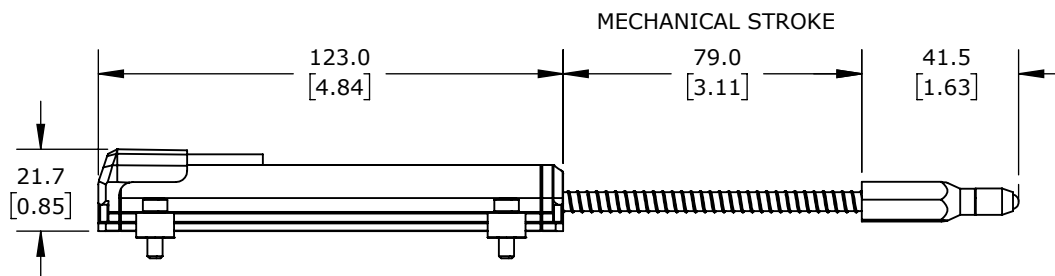


# TECHNICAL SPECIFICATIONS

SLPC [MM]	75
US [ USEFUL STROKE ]	75
MS [ MECHANICAL STROKE ]	79
L [ TOTAL STROKE ]	332



ISOMETRIC VIEW



PROSENSE POTENTIOMETER LINEAR POSITION SENSOR, SPRING LOADED SLIDE, 75MM STROKE, 33 X 33 X 172MM BODY, CHANNEL MOUNT, 8MM DIN 43650 FORM C.

**LSSR-33P-0075-A5-C2**

AutomationDirect.com  
1-800-633-0405



3rd  
ANGLE

NOT TO  
SCALE

PART DIMENSIONS MAY DIFFER SLIGHTLY  
DUE TO MANUFACTURER'S VARIANCES

METRIC UNITS USED  
FOR PART DESIGN

UNLESS OTHERWISE  
SPECIFIED UNITS ARE:

**mm**  
[inch]

LATEST VERSION  
1/14/2025

SHEET 1 OF 1