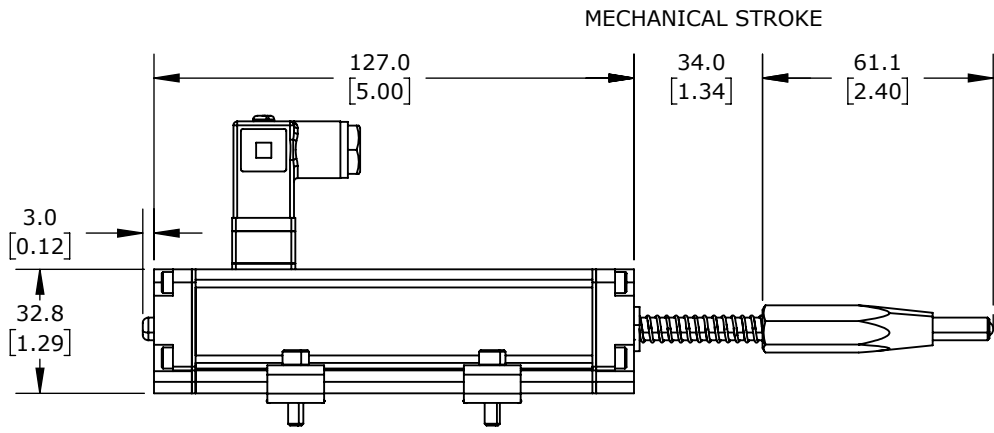
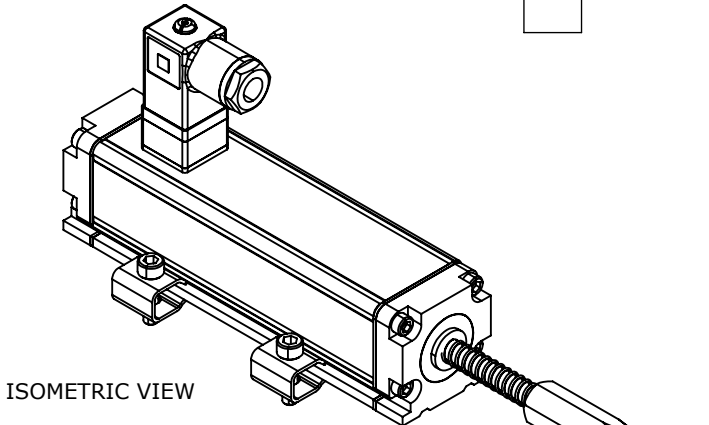
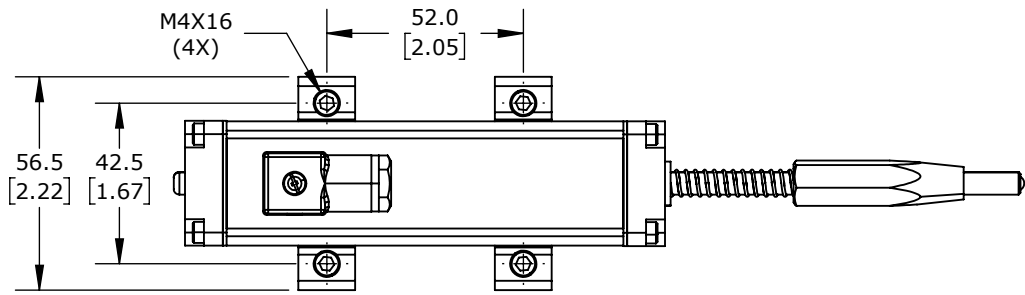
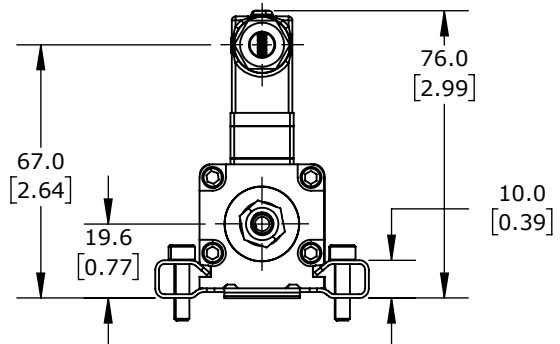


TECHNICAL SPECIFICATIONS

SLPC [MM]	30
US [USEFUL STROKE]	30
MS [MECHANICAL STROKE]	34
L [TOTAL STROKE]	227



MECHANICAL STROKE



PROSENSE POTENTIOMETER LINEAR POSITION SENSOR, SPRING LOADED SLIDE, 30MM STROKE, 33 X 33 X 127MM BODY, CHANNEL MOUNT, 8MM DIN 43650 FORM C.

LSSR-33P-0030-A5-C2

AutomationDirect.com
1-800-633-0405