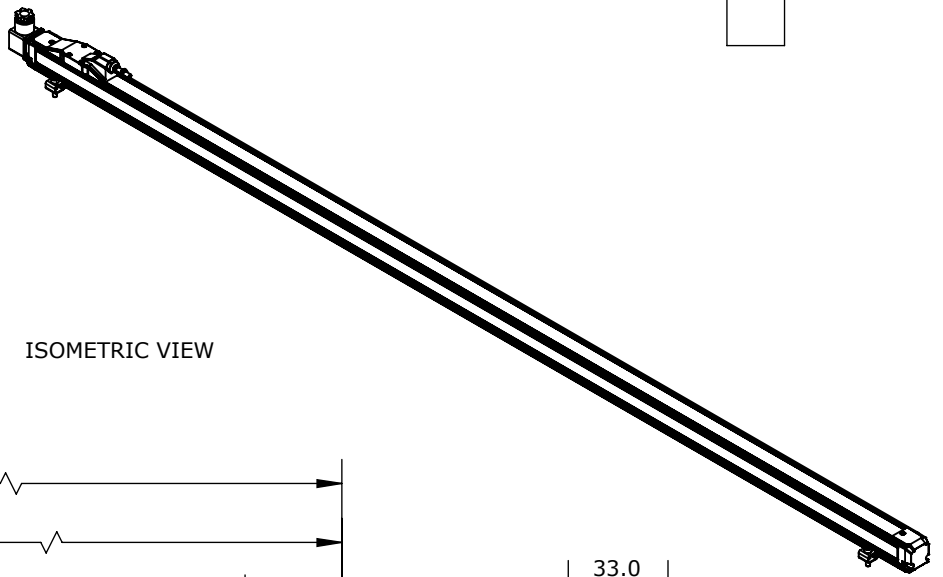
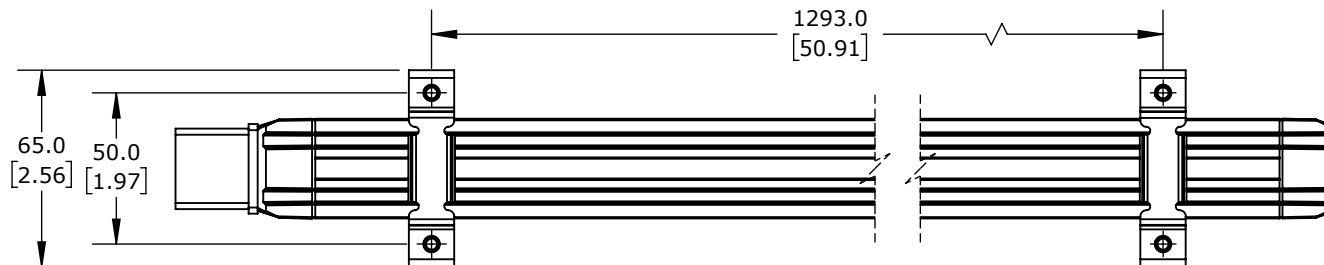
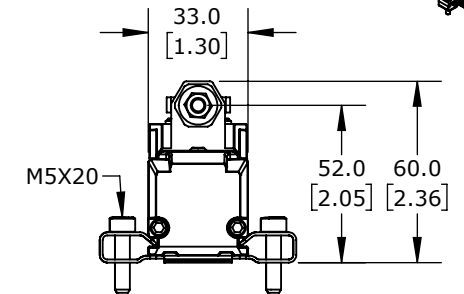
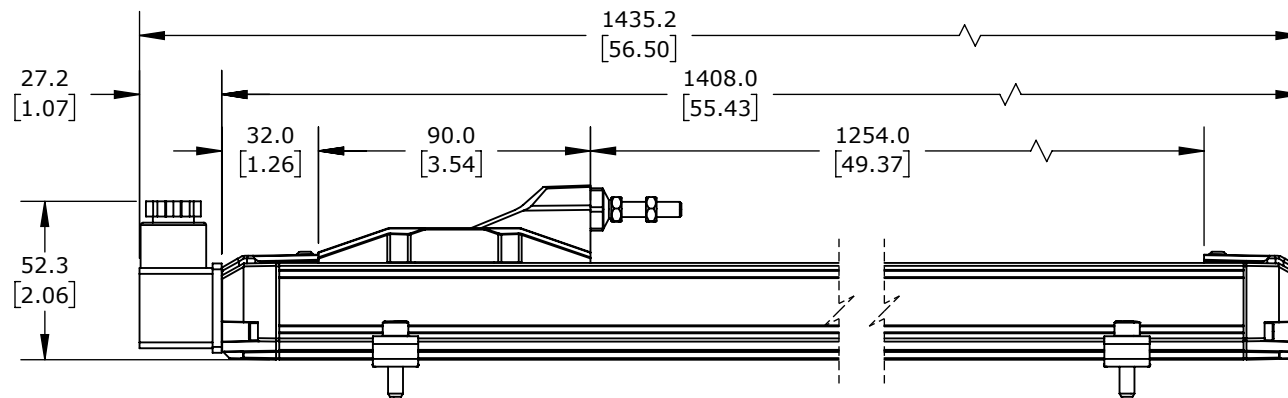


TECHNICAL SPECIFICATIONS

SLPC [MM]	1250
US [USEFUL STROKE]	1250
MS [MECHANICAL STROKE]	1254
L [TOTAL STROKE]	1436



ISOMETRIC VIEW



PROSENSE POTENTIOMETER LINEAR POSITION SENSOR, RODLESS SLIDE, 1250MM STROKE, 33 X 33 X 1408MM
BODY, CHANNEL MOUNT, 18MM DIN 43650 FORM A.

LRS-33P-1250-D20-C1

AutomationDirect.com
1-800-633-0405



3rd
ANGLE

NOT TO
SCALE

PART DIMENSIONS MAY DIFFER SLIGHTLY
DUE TO MANUFACTURER'S VARIANCES

METRIC UNITS USED
FOR PART DESIGN

UNLESS OTHERWISE
SPECIFIED UNITS ARE:

mm
[inch]

LATEST VERSION
1/14/2025

SHEET 1 OF 1