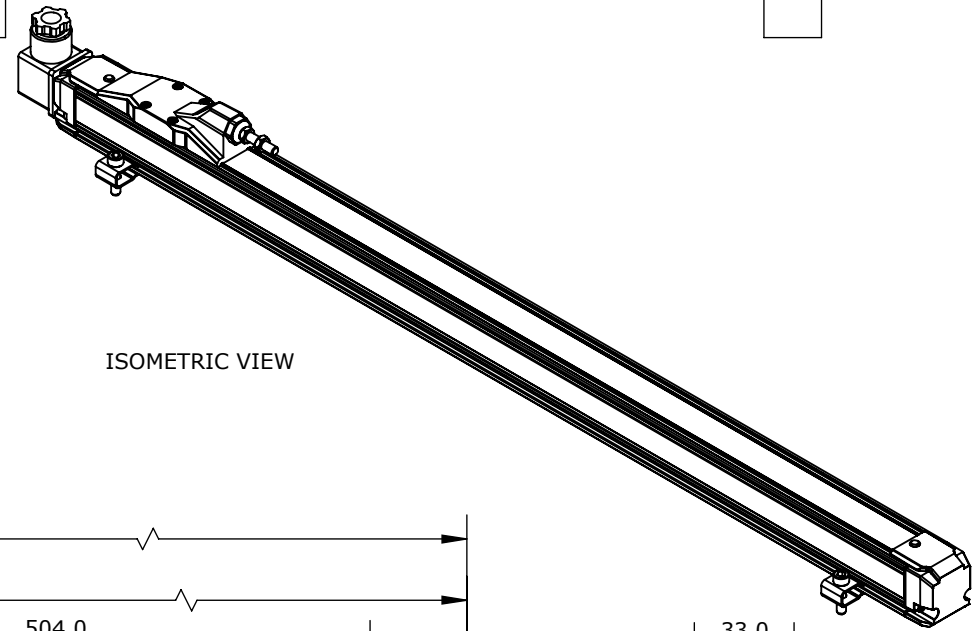
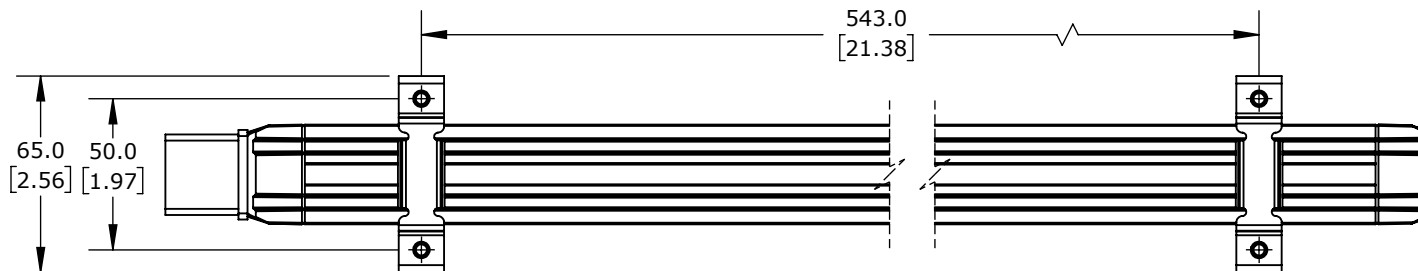
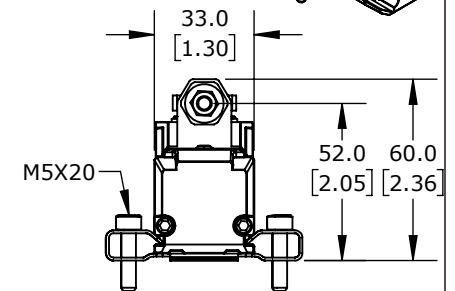
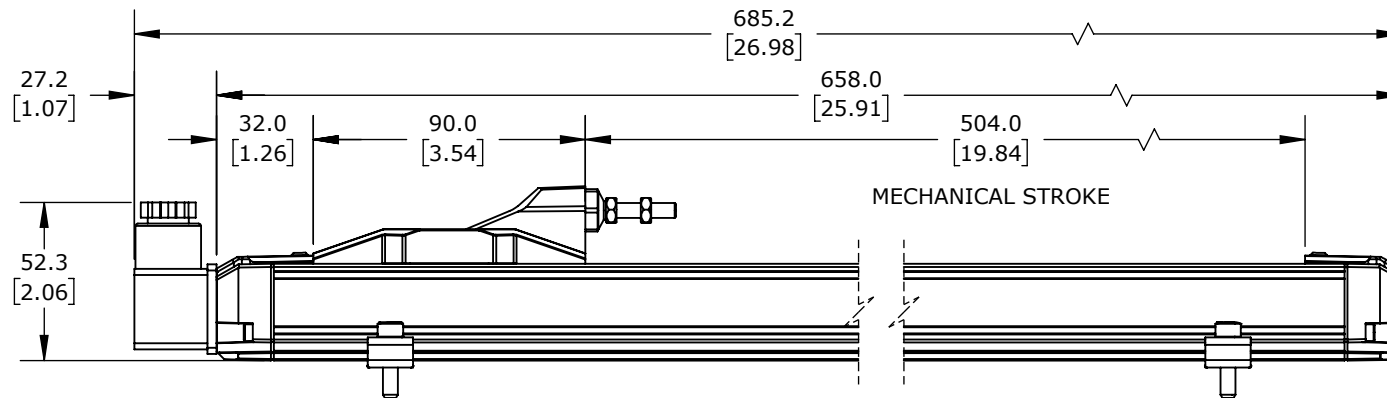


# TECHNICAL SPECIFICATIONS

SLPC [MM]	500
US [ USEFUL STROKE ]	500
MS [ MECHANICAL STROKE ]	504
L [ TOTAL STROKE ]	686



ISOMETRIC VIEW



PROSENSE POTENTIOMETER LINEAR POSITION SENSOR, RODLESS SLIDE, 500MM STROKE, 33 X 33 X 658MM  
BODY, CHANNEL MOUNT, 18MM DIN 43650 FORM A.

**LRS-33P-0500-D5-C1**

AutomationDirect.com  
1-800-633-0405



3rd  
ANGLE

NOT TO  
SCALE

PART DIMENSIONS MAY DIFFER SLIGHTLY  
DUE TO MANUFACTURER'S VARIANCES

METRIC UNITS USED  
FOR PART DESIGN

UNLESS OTHERWISE  
SPECIFIED UNITS ARE:

**mm**  
**[inch]**

LATEST VERSION  
1/14/2025

SHEET 1 OF 1