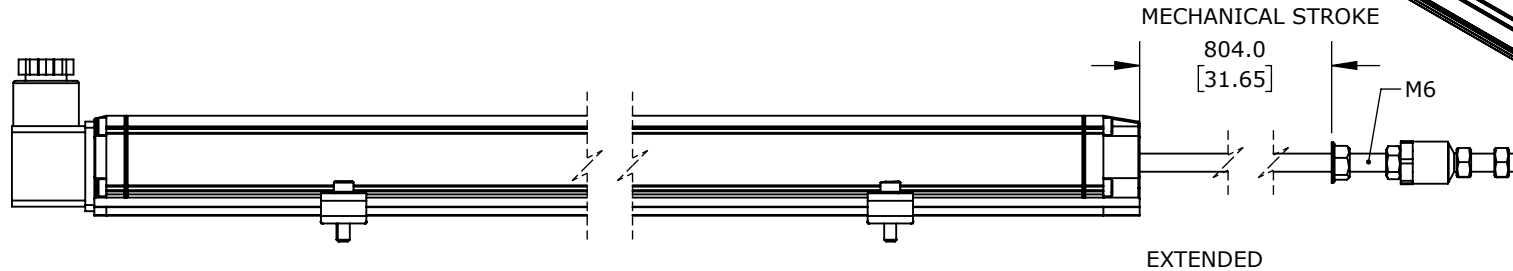
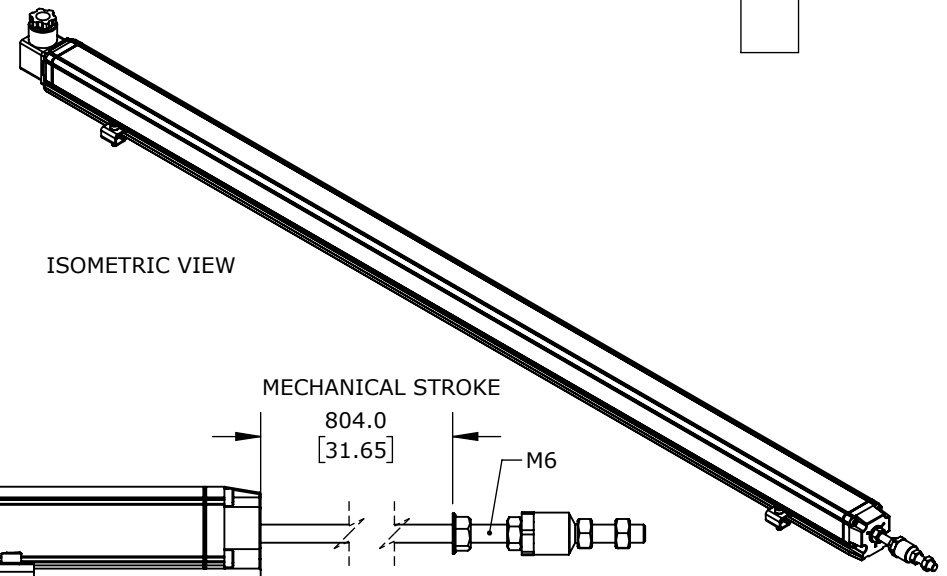


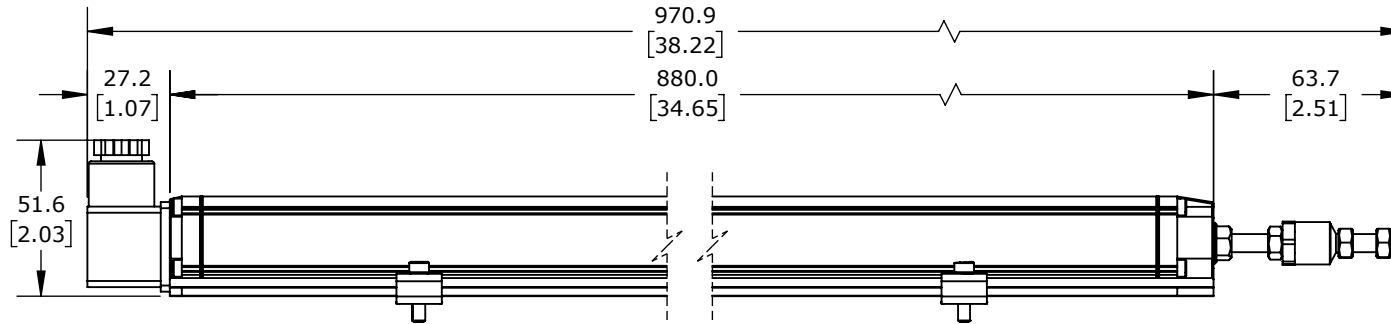
TECHNICAL SPECIFICATIONS

SLPC [MM]	800
US [USEFUL STROKE]	800
MS [MECHANICAL STROKE]	854
L [TOTAL STROKE]	939

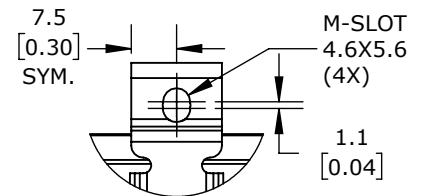
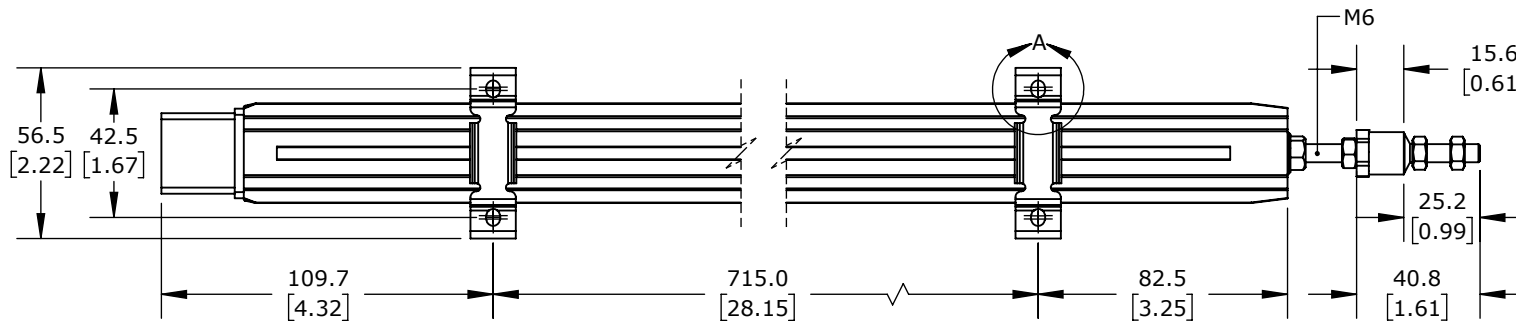
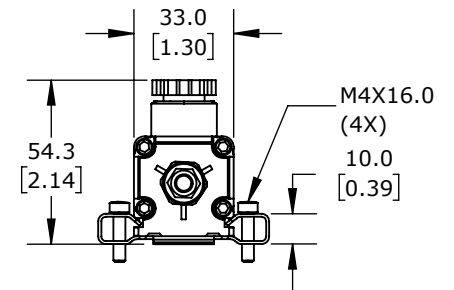
ISOMETRIC VIEW



EXTENDED



RETRACTED



DETAIL A SCALE 2 : 2.5

PROSENSE POTENTIOMETER LINEAR POSITION SENSOR, FIXED SLIDE, 800MM STROKE, 33 X 33 X 880MM BODY, CHANNEL MOUNT, 18MM DIN 43650 FORM A.

LSR-33P-0800-D10-C1

AutomationDirect.com
1-800-633-0405



3rd
ANGLE

NOT TO
SCALE

PART DIMENSIONS MAY DIFFER SLIGHTLY
DUE TO MANUFACTURER'S VARIANCES

METRIC UNITS USED
FOR PART DESIGN

UNLESS OTHERWISE
SPECIFIED UNITS ARE:

mm
[inch]

LATEST VERSION
1/14/2025

SHEET 1 OF 1