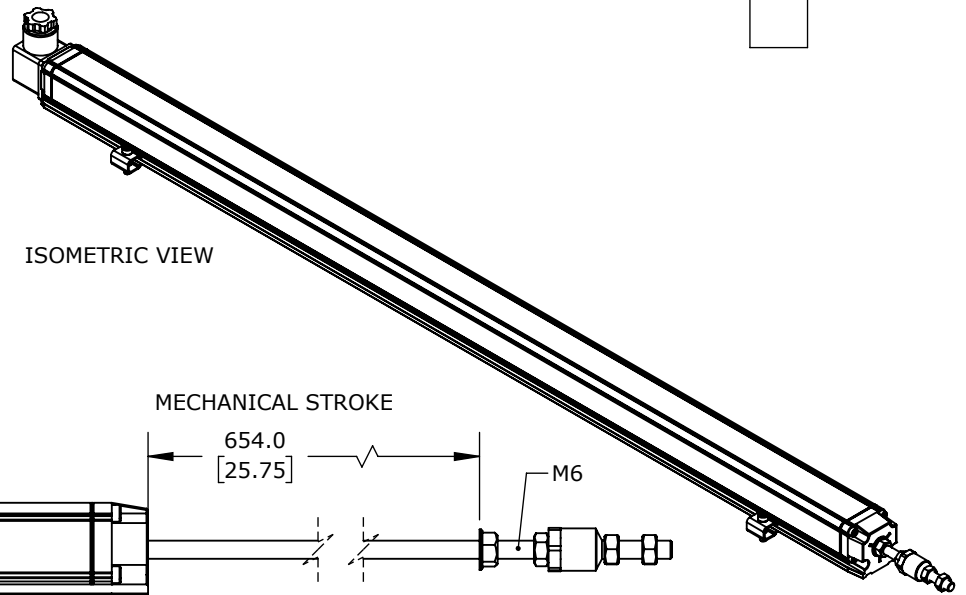
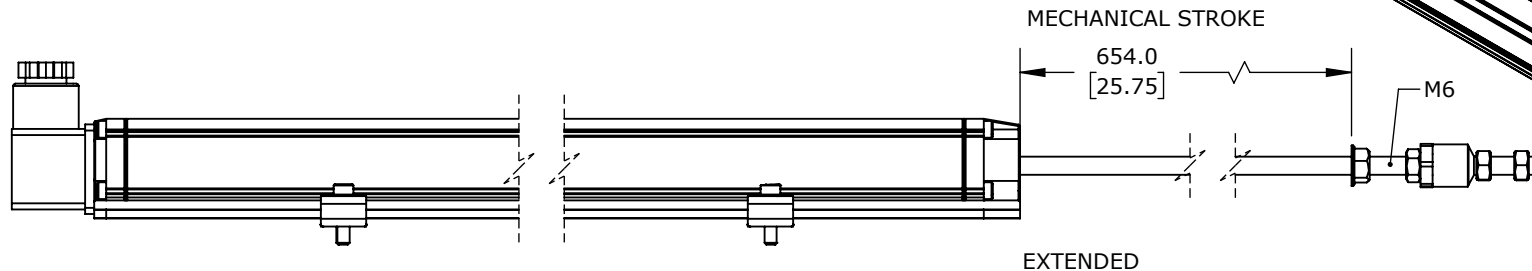


TECHNICAL SPECIFICATIONS

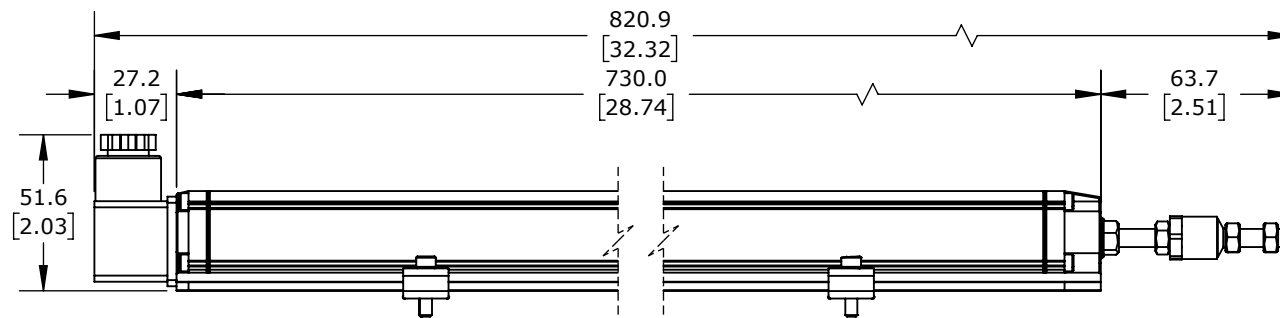
SLPC [MM]	650
US [USEFUL STROKE]	650
MS [MECHANICAL STROKE]	654
L [TOTAL LENGTH]	789



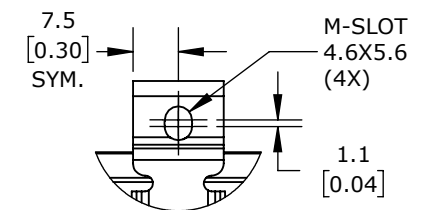
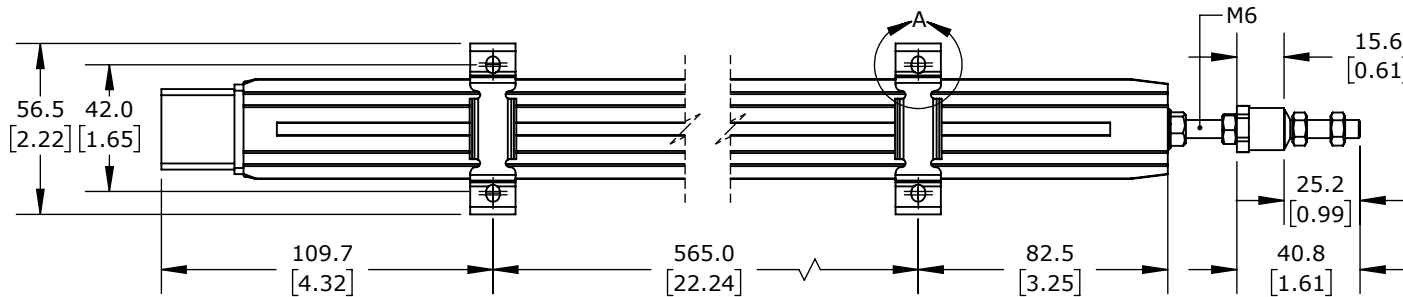
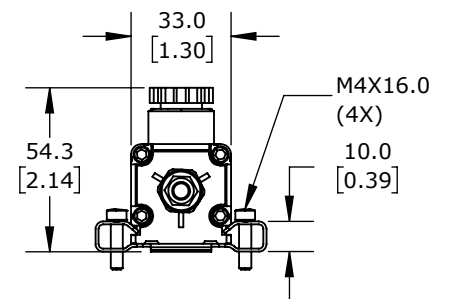
ISOMETRIC VIEW



EXTENDED



RETRACTED



DETAIL A
SCALE 2 : 2.5

PROSENSE POTENTIOMETER LINEAR POSITION SENSOR, FIXED SLIDE, 650MM STROKE, 33 X 33 X 730MM BODY, CHANNEL MOUNT, 18MM DIN 43650 FORM A.

LSR-33P-0650-D10-C1

AutomationDirect.com
1-800-633-0405



3rd
ANGLE

NOT TO
SCALE

PART DIMENSIONS MAY DIFFER SLIGHTLY
DUE TO MANUFACTURER'S VARIANCES

METRIC UNITS USED
FOR PART DESIGN

UNLESS OTHERWISE
SPECIFIED UNITS ARE:

mm
[inch]

LATEST VERSION
1/14/2025

SHEET 1 OF 1