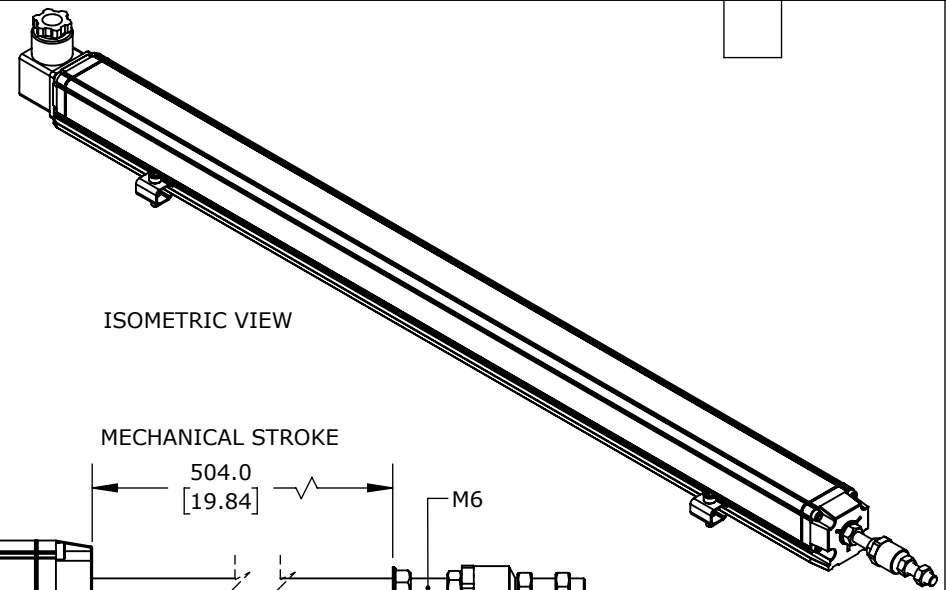
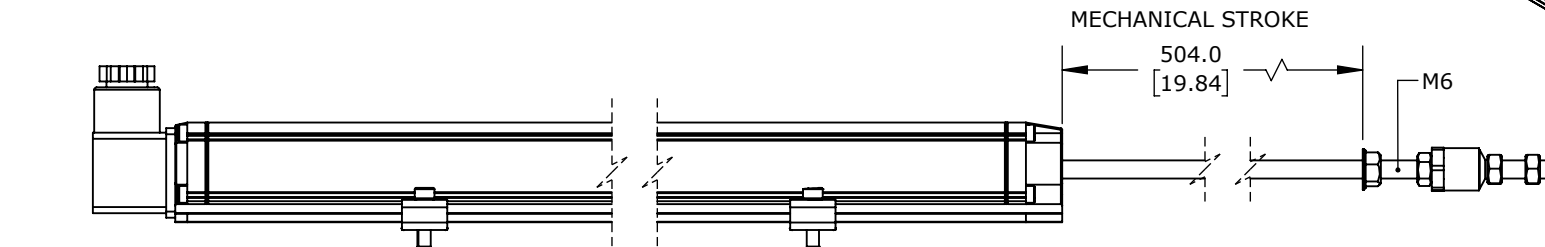


# TECHNICAL SPECIFICATIONS

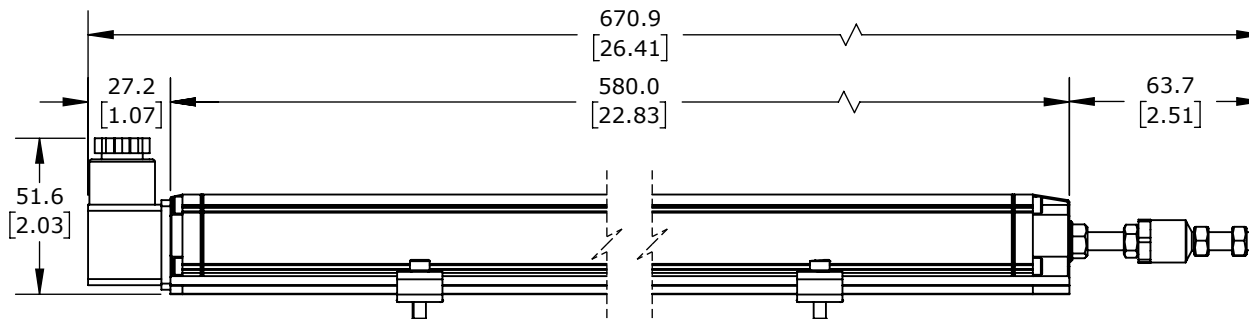
SLPC [MM]	500
US [ USEFUL STROKE ]	500
MS [ MECHANICAL STROKE ]	504
L [ TOTAL LENGTH ]	639



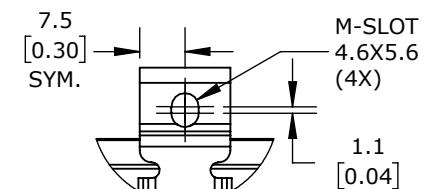
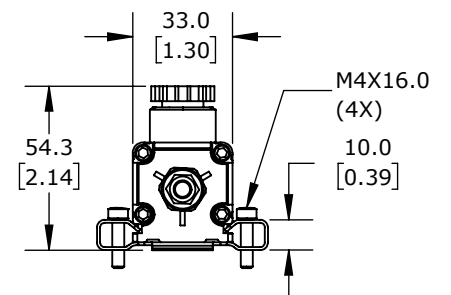
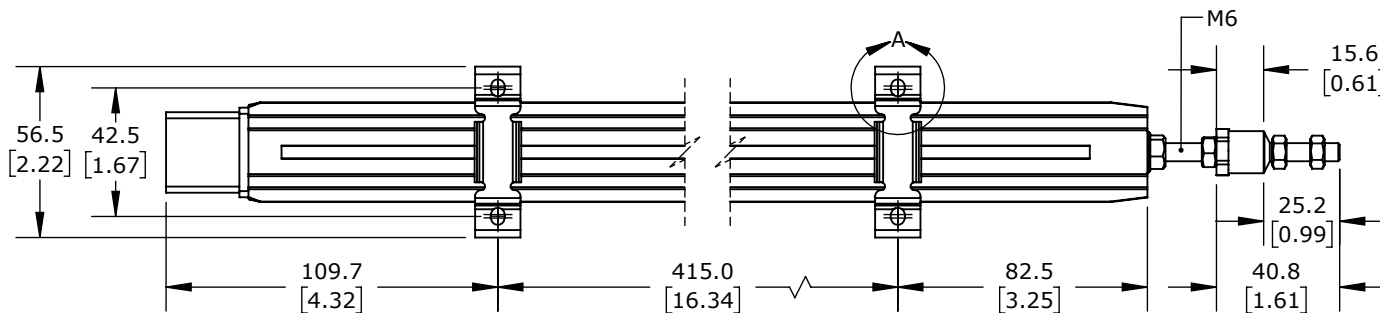
ISOMETRIC VIEW



EXTENDED



RETRACTED



DETAIL A  
SCALE 2 : 2.5

PROSENSE POTENTIOMETER LINEAR POSITION SENSOR, FIXED SLIDE, 500MM STROKE, 33 X 33 X 580MM BODY, CHANNEL MOUNT, 18MM DIN 43650 FORM A.

LSR-33P-0500-D5-C1

AutomationDirect.com  
1-800-633-0405



3rd  
ANGLE

NOT TO  
SCALE

PART DIMENSIONS MAY DIFFER SLIGHTLY  
DUE TO MANUFACTURER'S VARIANCES

METRIC UNITS USED  
FOR PART DESIGN

UNLESS OTHERWISE  
SPECIFIED UNITS ARE:

mm  
[inch]

LATEST VERSION  
1/14/2025

SHEET 1 OF 1