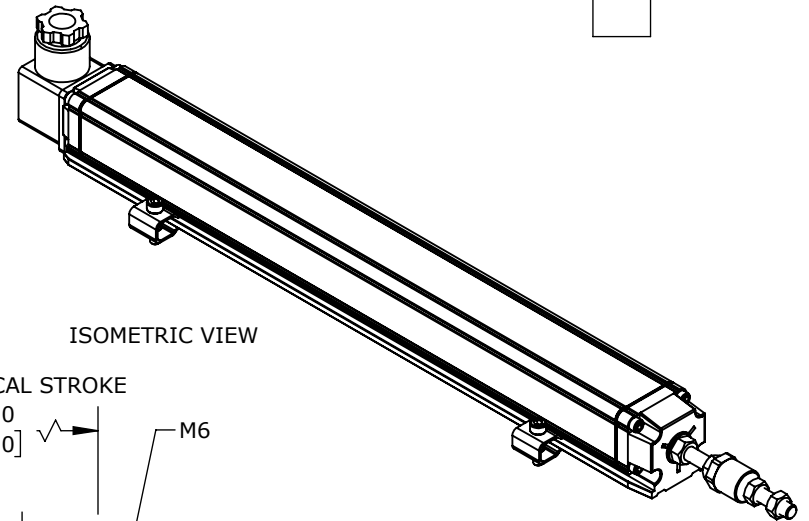
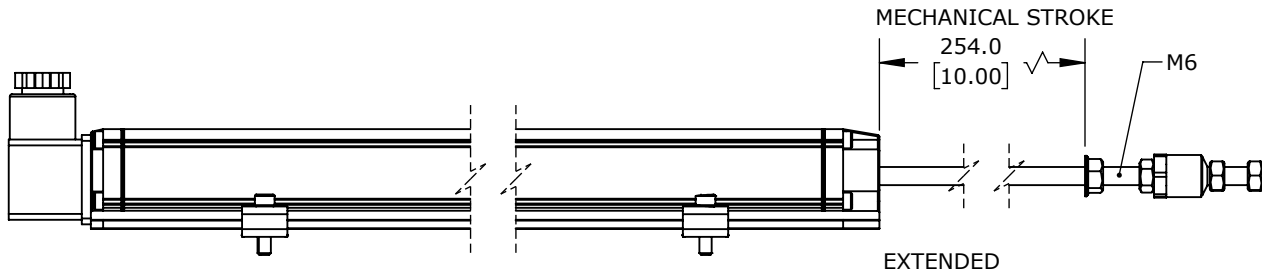


TECHNICAL SPECIFICATIONS

| | |
|--------------------------|-----|
| SLPC [MM] | 250 |
| US [USEFUL STROKE] | 250 |
| MS [MECHANICAL STROKE] | 254 |
| L [TOTAL LENGTH] | 389 |

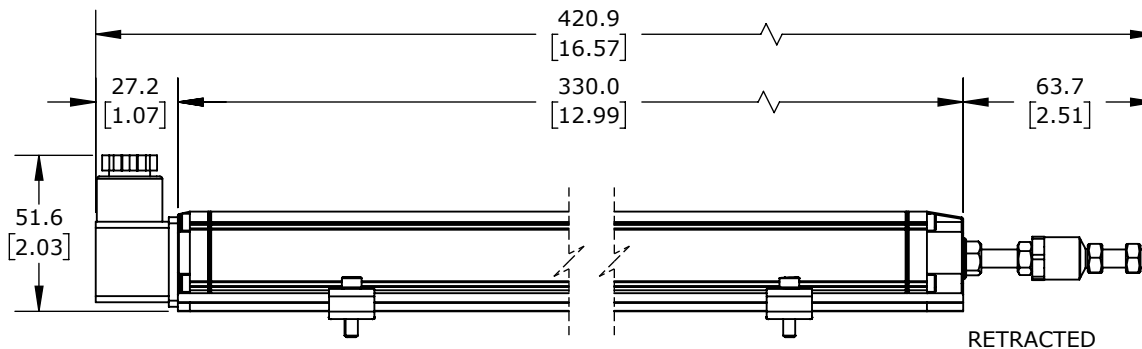


ISOMETRIC VIEW

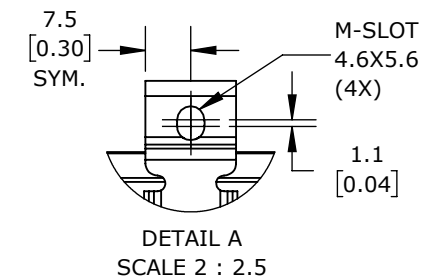
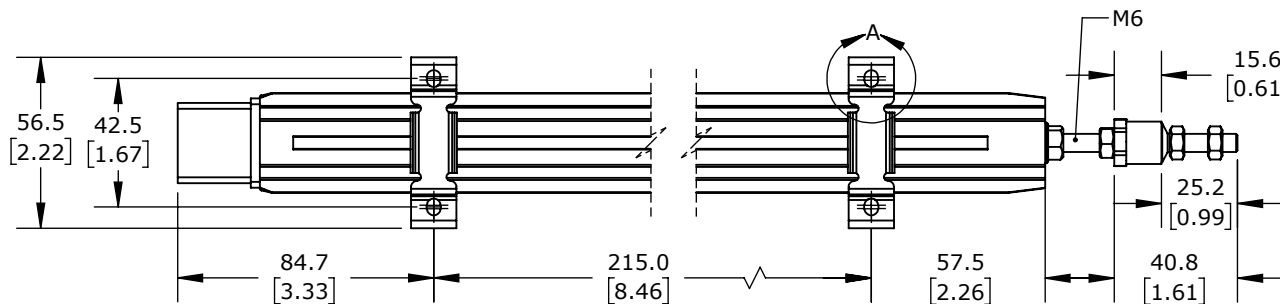
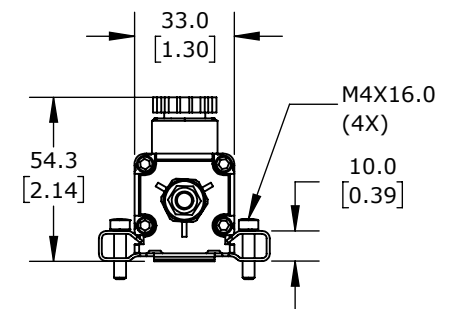


MECHANICAL STROKE

EXTENDED



RETRACTED



PROSENSE POTENTIOMETER LINEAR POSITION SENSOR, FIXED SLIDE, 250MM STROKE, 33 X 33 X 330MM BODY, CHANNEL MOUNT, 18MM DIN 43650 FORM A.

LSR-33P-0250-D5-C1

AutomationDirect.com
1-800-633-0405



3rd
ANGLE

NOT TO
SCALE

PART DIMENSIONS MAY DIFFER SLIGHTLY
DUE TO MANUFACTURER'S VARIANCES

METRIC UNITS USED
FOR PART DESIGN

UNLESS OTHERWISE
SPECIFIED UNITS ARE:

mm
[inch]

LATEST VERSION
1/10/2025

SHEET 1 OF 1