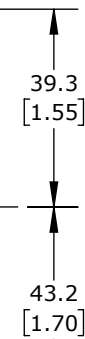


ISOMETRIC VIEW



DOLD SAFETY RELAY, MOTOR STANDSTILL MONITORING, 0.2-4V, 2-CHANNEL, 24 VDC, (3) N.O. AND (1) N.C.
SAFETY OUTPUT(S), PUSH-IN CAGE CLAMP.

LH5946-PC-24-40

AutomationDirect.com
1-800-633-0405

	3rd ANGLE	NOT TO SCALE	PART DIMENSIONS MAY DIFFER SLIGHTLY DUE TO MANUFACTURER'S VARIANCES	METRIC UNITS USED FOR PART DESIGN	UNLESS OTHERWISE SPECIFIED UNITS ARE:	mm [inch]	LATEST VERSION 6/14/2024	SHEET 1 OF 1
--	--------------	-----------------	--	--------------------------------------	--	---------------------	-----------------------------	--------------