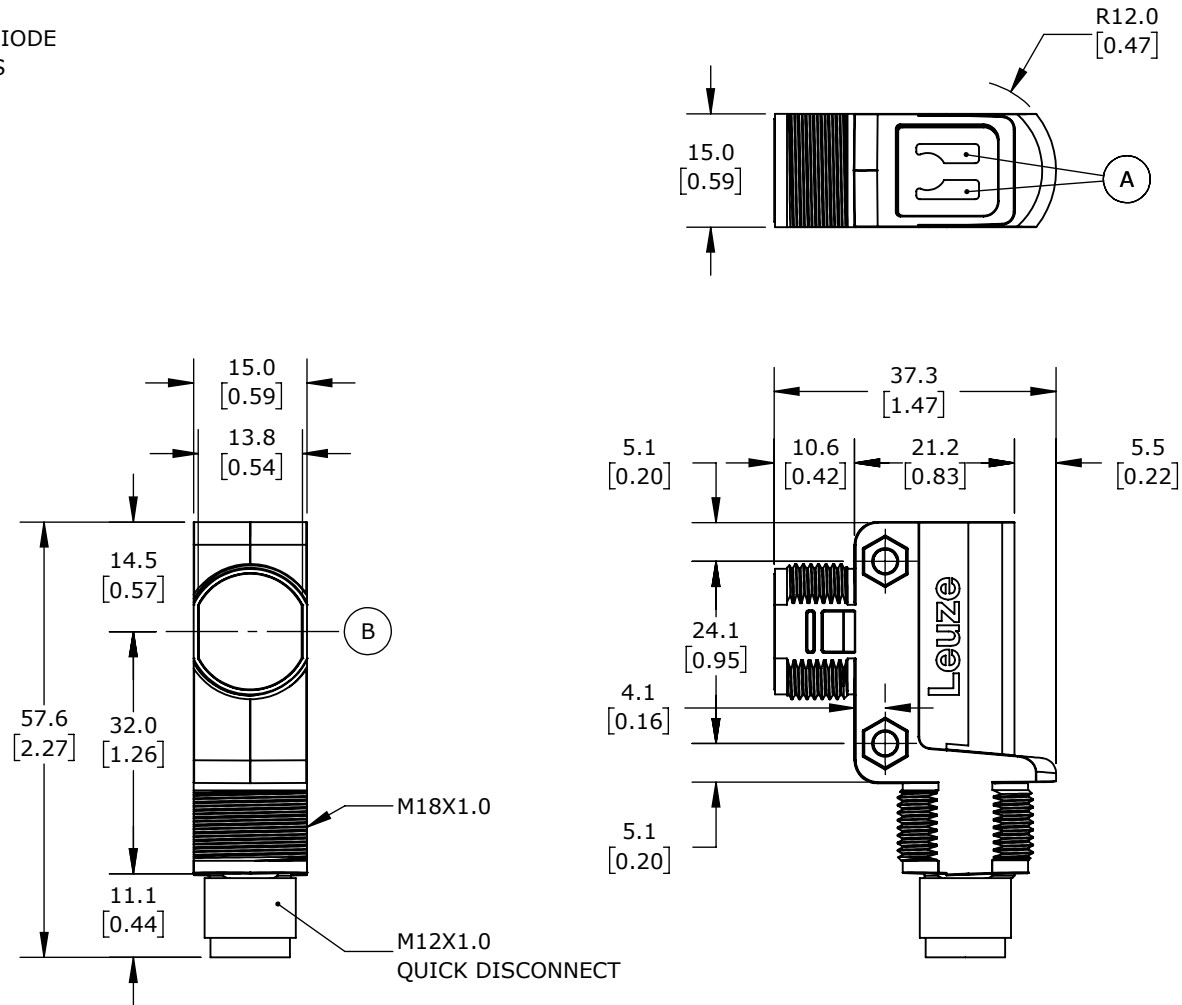


NOTE :

A = INDICATOR DIODE

B = OPTICAL AXIS



LEUZE PHOTOELECTRIC SENSOR, RECTANGULAR, ABS PLASTIC HOUSING, THROUGH-BEAM RECEIVER, 0-10M SENSING DISTANCE, 10-30 VDC OPERATING VOLTAGE, COMPLEMENTARY LIGHT-ON/DARK-ON, PNP, 4-WIRE, 4-PIN M12 QUICK-DISCONNECT.

LE28-4P-M12

AutomationDirect.com
1-800-633-0405



3rd
ANGLE

NOT TO
SCALE

PART DIMENSIONS MAY DIFFER SLIGHTLY
DUE TO MANUFACTURER'S VARIANCES

METRIC UNITS USED
FOR PART DESIGN

UNLESS OTHERWISE
SPECIFIED UNITS ARE:

mm
[inch]

LATEST VERSION
2/28/2024

SHEET 1 OF 1