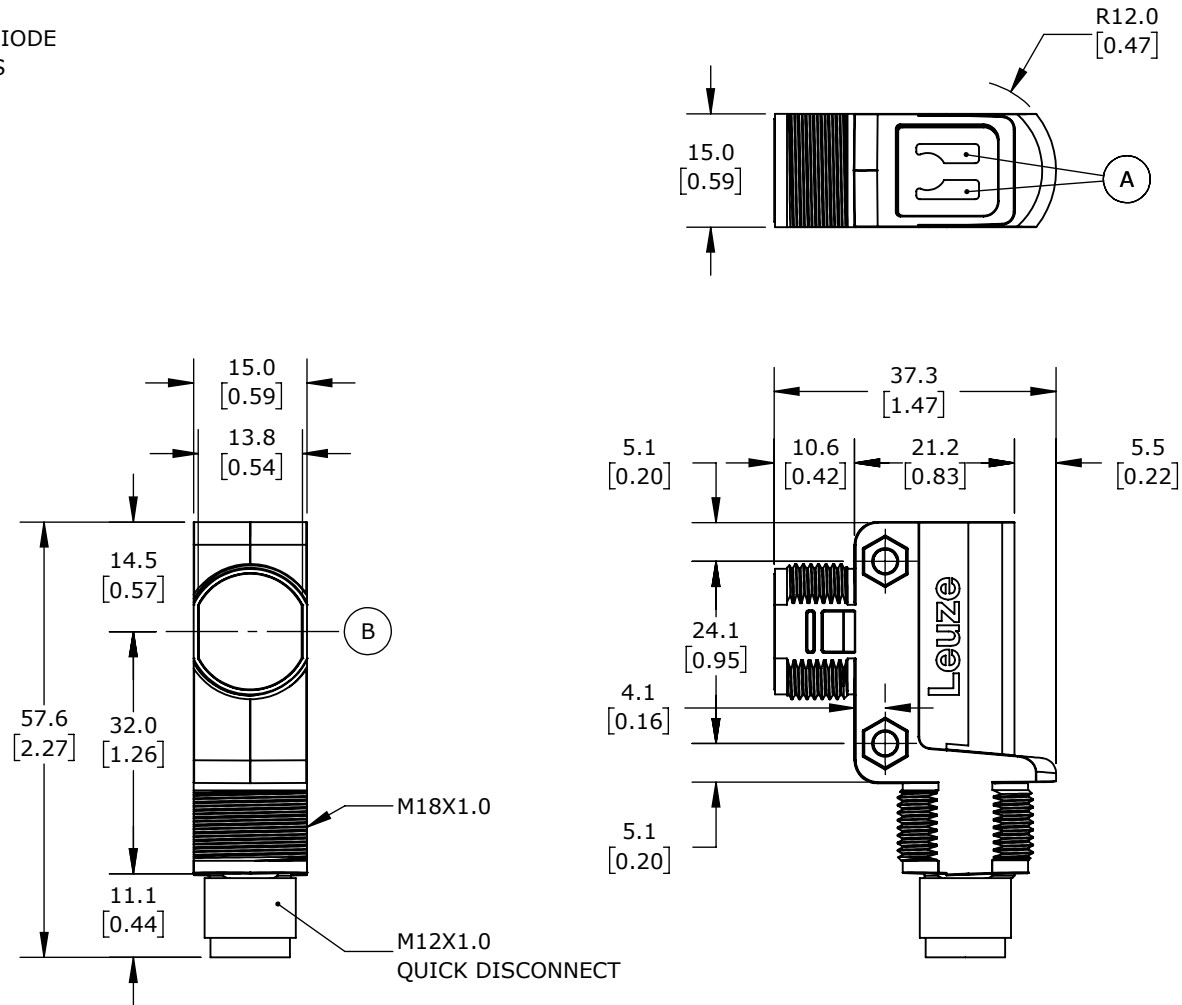


NOTE :

A = INDICATOR DIODE

B = OPTICAL AXIS



LEUZE PHOTOELECTRIC SENSOR, RECTANGULAR, ABS PLASTIC HOUSING, THROUGH-BEAM RECEIVER, 0-10M SENSING DISTANCE, 10-30 VDC OPERATING VOLTAGE, COMPLEMENTARY LIGHT-ON/DARK-ON, NPN, 4-WIRE, 4-PIN M12 QUICK-DISCONNECT.

**LE28-2N-M12**

AutomationDirect.com  
1-800-633-0405



3rd  
ANGLE

NOT TO  
SCALE

PART DIMENSIONS MAY DIFFER SLIGHTLY  
DUE TO MANUFACTURER'S VARIANCES

METRIC UNITS USED  
FOR PART DESIGN

UNLESS OTHERWISE  
SPECIFIED UNITS ARE:

**mm**  
**[inch]**

LATEST VERSION  
2/28/2024

SHEET 1 OF 1