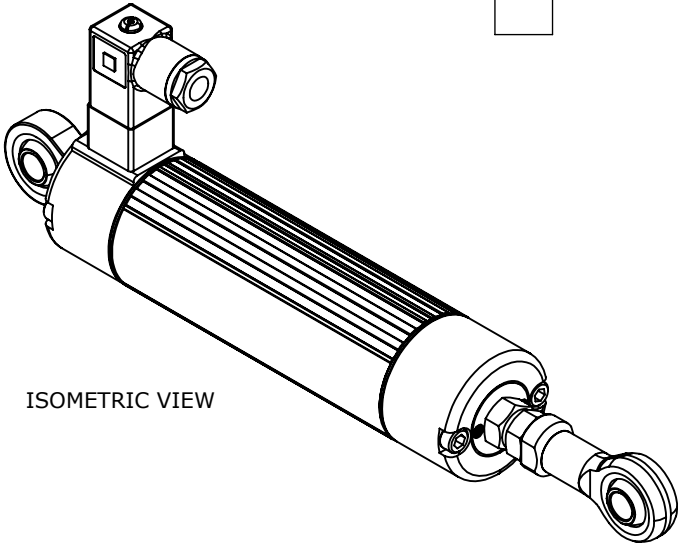
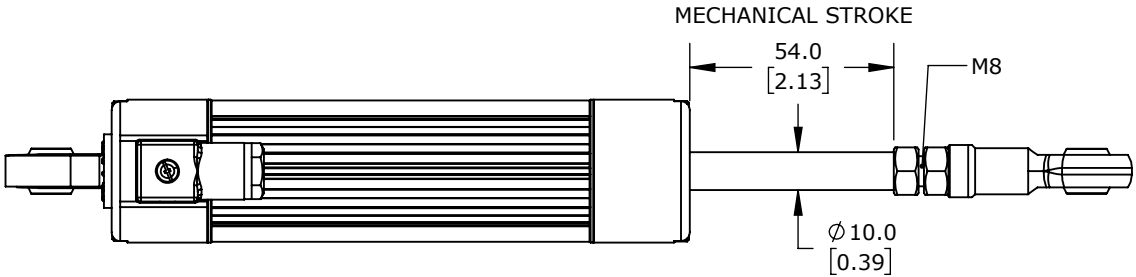


TECHNICAL SPECIFICATIONS

SLPC [MM]	50
US [USEFUL STROKE]	50
MS [MECHANICAL STROKE]	54
L [TOTAL LENGTH]	222



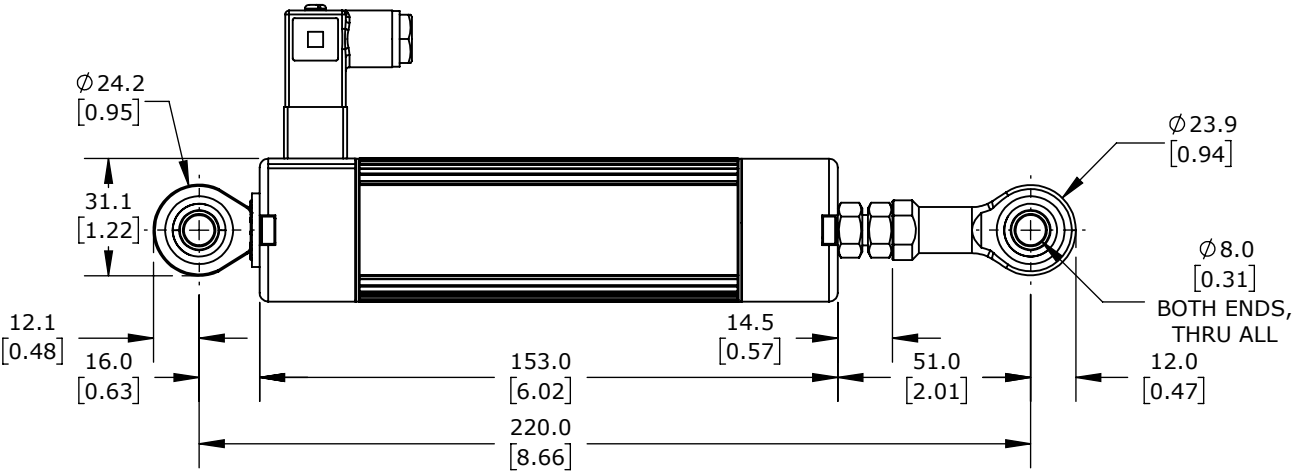
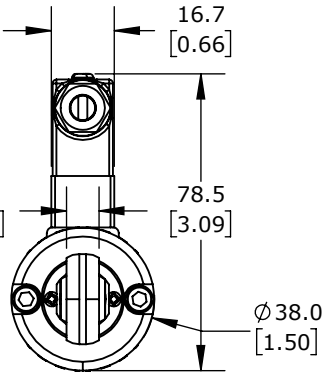
ISOMETRIC VIEW



MECHANICAL STROKE

EXTENDED

±3MM ADJUSTABLE LENGTH



RETRACTED

PROSENSE POTENTIOMETER LINEAR POSITION SENSOR, PIVOTING SLIDE, 50MM STROKE, 38MM DIAMETER X 153MM BODY, ROD EYES MOUNT, 8MM DIN 43650 FORM C.

LCR-38P-0050-A5-C1

AutomationDirect.com
1-800-633-0405



3rd
ANGLE

NOT TO
SCALE

PART DIMENSIONS MAY DIFFER SLIGHTLY
DUE TO MANUFACTURER'S VARIANCES

METRIC UNITS USED
FOR PART DESIGN

UNLESS OTHERWISE
SPECIFIED UNITS ARE:

mm
[inch]

LATEST VERSION
1/14/2025

SHEET 1 OF 1