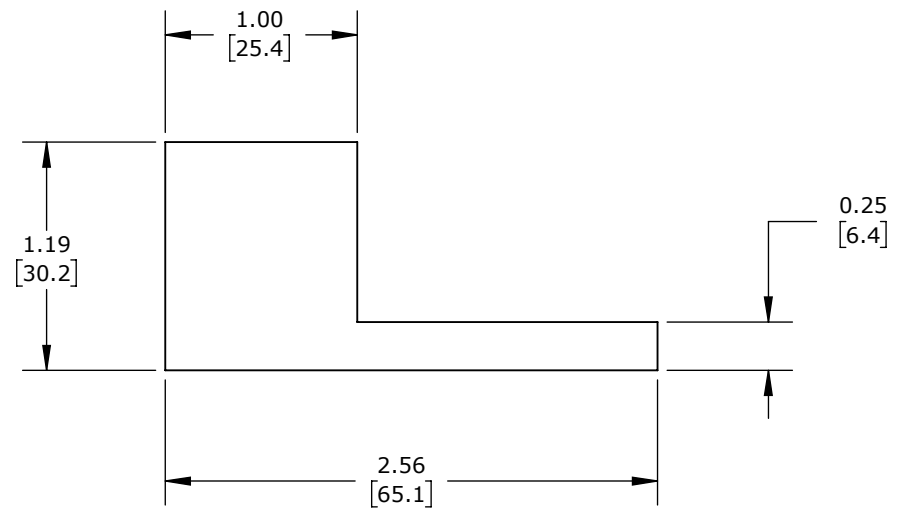
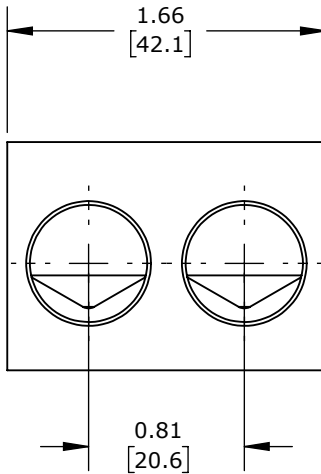
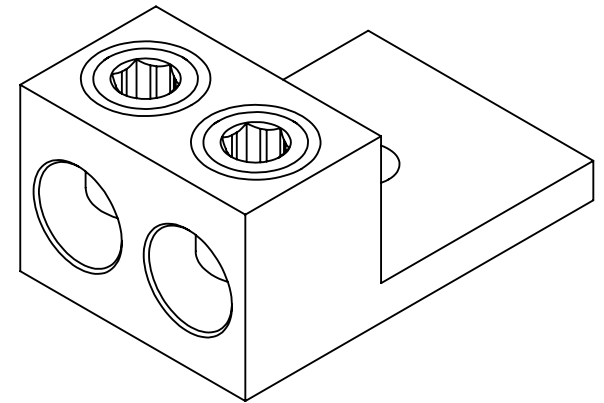
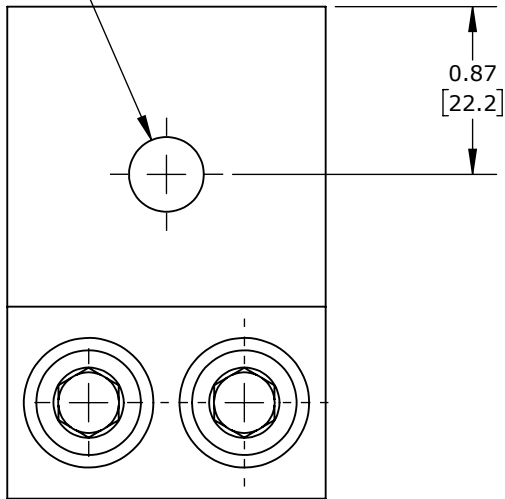


Ø 0.39
[9.9]



BOX TYPE, ALUMINUM-TIN PLATED, 600V, 2 OPENINGS, (1) 6 AWG-250
MCM COPPER OR (1) 6 AWG-250 MCM ALUMINUM, AL9CU.

PENN UNION MECHANICAL LUG

L2A-250-1

AutomationDirect.com
1-800-633-0405



3rd
ANGLE

NOT TO
SCALE

PART DIMENSIONS MAY DIFFER SLIGHTLY
DUE TO MANUFACTURER'S VARIANCES

INCH UNITS USED FOR
PART DESIGN

UNLESS OTHERWISE
SPECIFIED UNITS ARE:

inch
[mm]

LATEST VERSION
11/15/2023

SHEET 1 OF 1