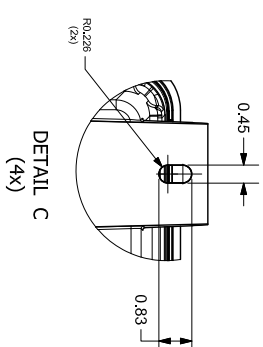
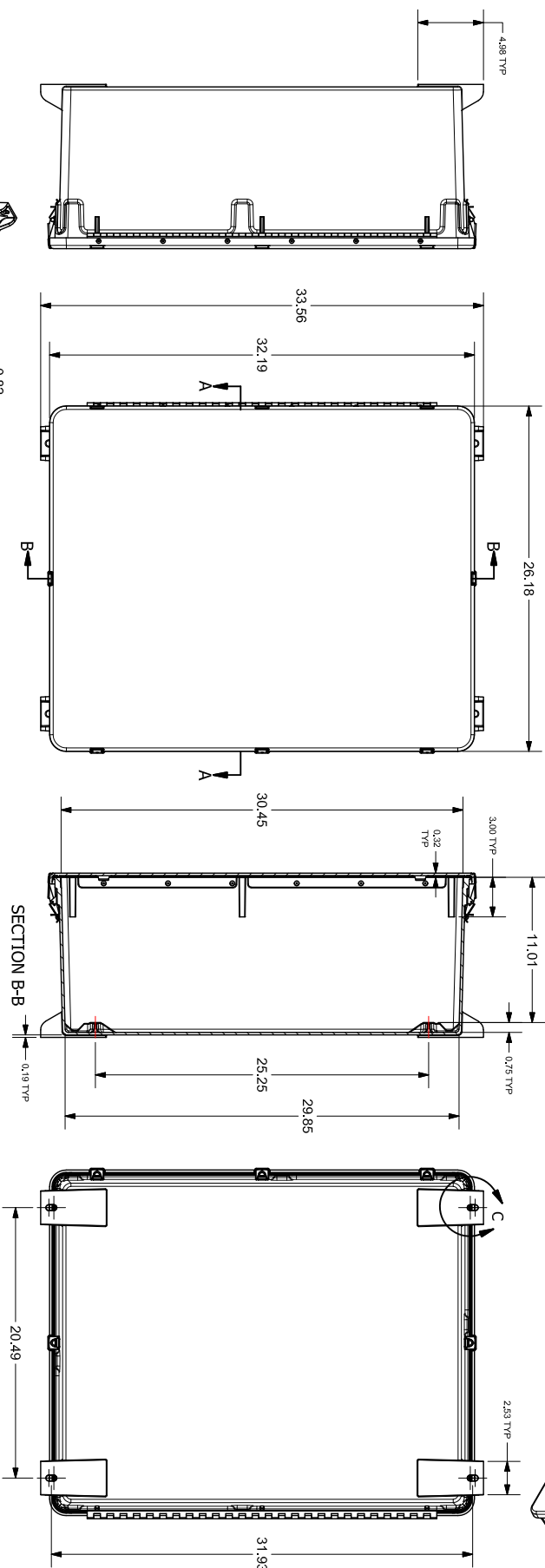


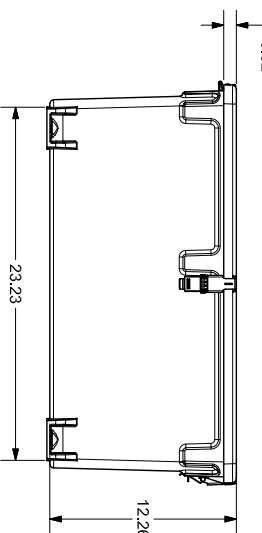
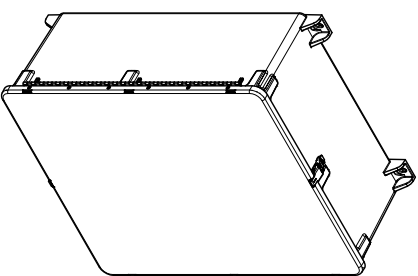
SECTION A-A



DETAIL C
(4X)



SECTION B-B



3rd
ANGLE

NOT TO
SCALE

PART DIMENSIONS MAY DIFFER SLIGHTLY
DUE TO MANUFACTURER'S VARIANCES

METRIC UNITS USED
FOR PART DESIGN

UNLESS OTHERWISE
SPECIFIED UNITS ARE:

inch
[mm]

LATEST VERSION
1/27/2023

SHEET 1 OF 1

STAHLIN J SERIES ENCLOSURE, NEMA 1/3/3R/4/4X/12/13, 30 X 24 X 10IN (HXVXD), WALL MOUNT, FIBERGLASS REINFORCED
POLYESTER, PANTONE 428 C GLACIER GRAY, SINGLE-DOOR, (5) QUICK-RELEASE LATCHES, PADLOCK HASP AND STAPLE.

J3024HPL

AutomationDirect.com
1-800-633-0405