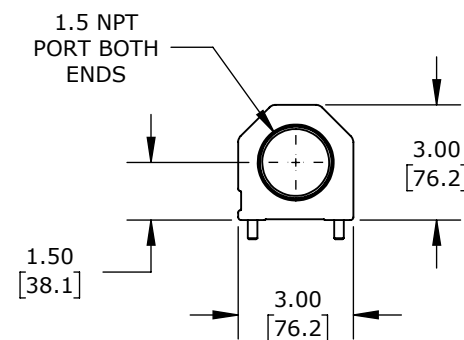
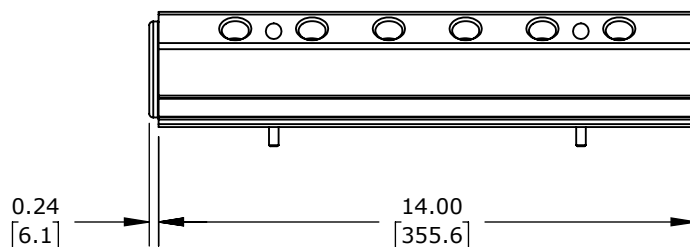
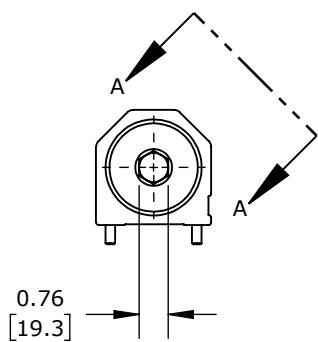
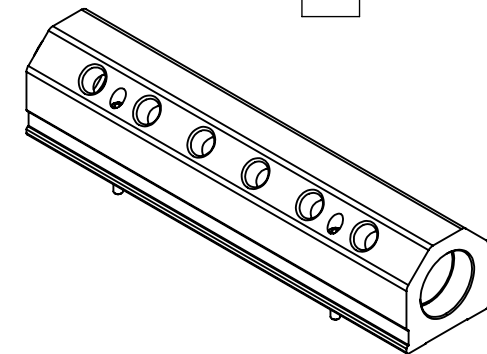
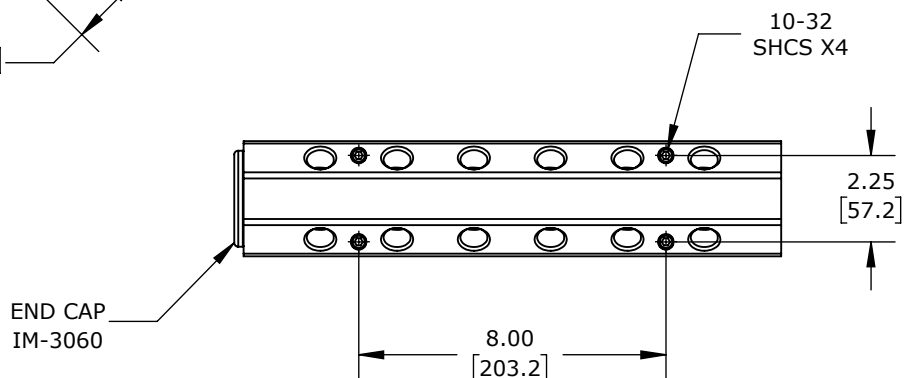


VIEW A-A



RED ANODIZED ALUMINUM, RECTANGULAR, 3000 PSI MAXIMUM OPERATING PRESSURE, (6) STATIONS, 1-1/2IN FEMALE NPT INLET(s), 1/2IN FEMALE NPT OUTLET(s), 45-DEG AND 135-DEG ORIENTATION.

CITO AIR, COOLANT, OIL OR WATER MANIFOLD

IM6-14-BD-12-1-2-N-R

AutomationDirect.com
1-800-633-0405

<p>3rd ANGLE</p>	<p>NOT TO SCALE</p>	<p>PART DIMENSIONS MAY DIFFER SLIGHTLY DUE TO MANUFACTURER'S VARIANCES</p>	<p>INCH UNITS USED FOR PART DESIGN</p>	<p>UNLESS OTHERWISE SPECIFIED UNITS ARE: inch [mm]</p>	<p>LATEST VERSION 9/18/2024</p>	<p>SHEET 1 OF 1</p>
------------------	---------------------	--	--	---	-------------------------------------	---------------------