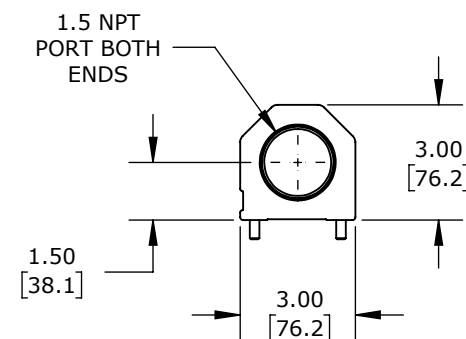
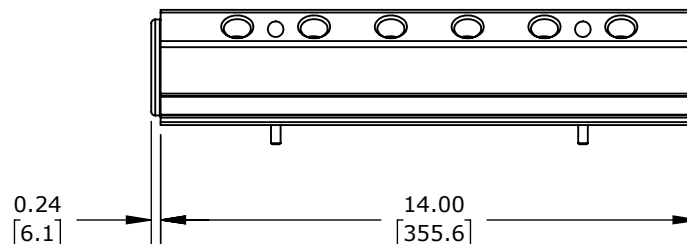
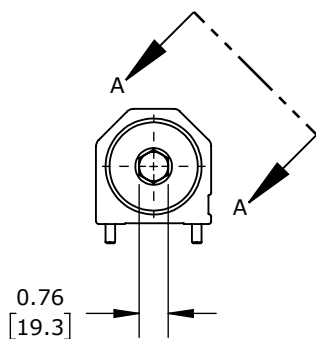
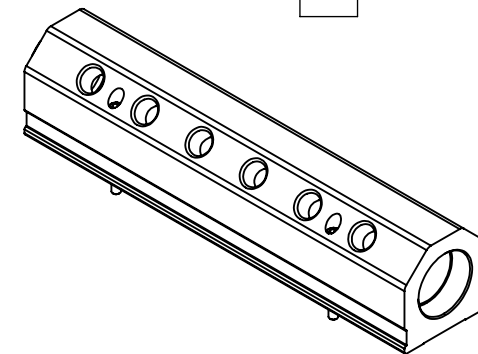
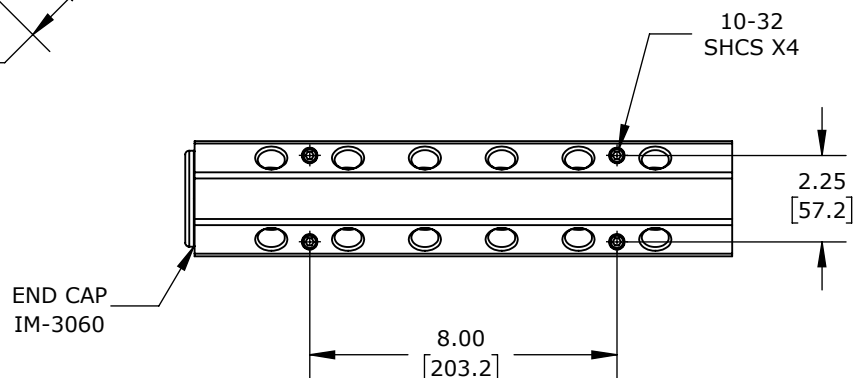


VIEW A-A



BLUE ANODIZED ALUMINUM, RECTANGULAR, 3000 PSI MAXIMUM OPERATING PRESSURE, (6) STATIONS, 1-1/2IN FEMALE NPT INLET(s), 1/2IN FEMALE NPT OUTLET(s), 45-DEG AND 135-DEG ORIENTATION.

CITO AIR, COOLANT, OIL OR WATER MANIFOLD

IM6-14-BD-12-1-2-N-B

AutomationDirect.com
1-800-633-0405



3rd
ANGLE

NOT TO
SCALE

PART DIMENSIONS MAY DIFFER SLIGHTLY
DUE TO MANUFACTURER'S VARIANCES

INCH UNITS USED FOR
PART DESIGN

UNLESS OTHERWISE
SPECIFIED UNITS ARE:

inch
[mm]

LATEST VERSION
9/18/2024

SHEET 1 OF 1