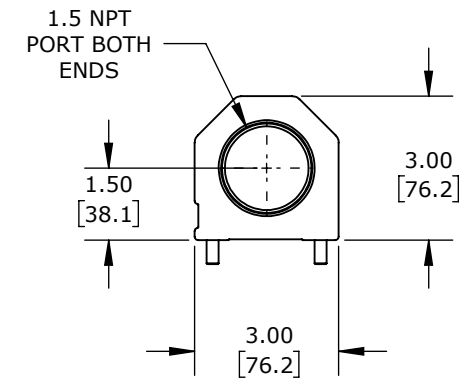
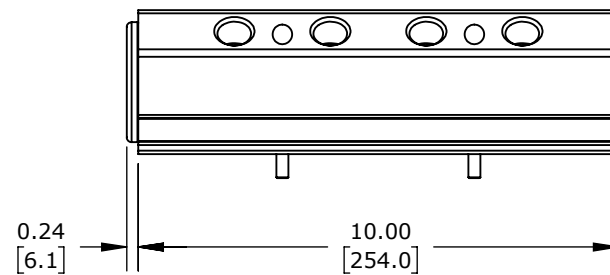
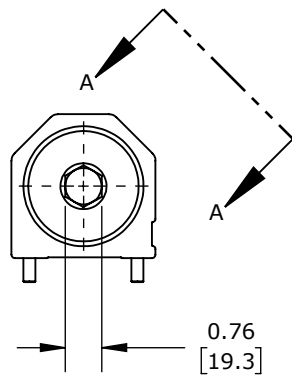
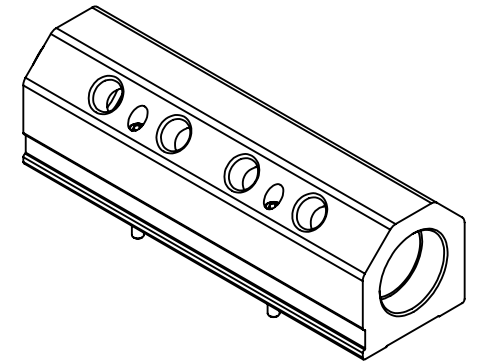
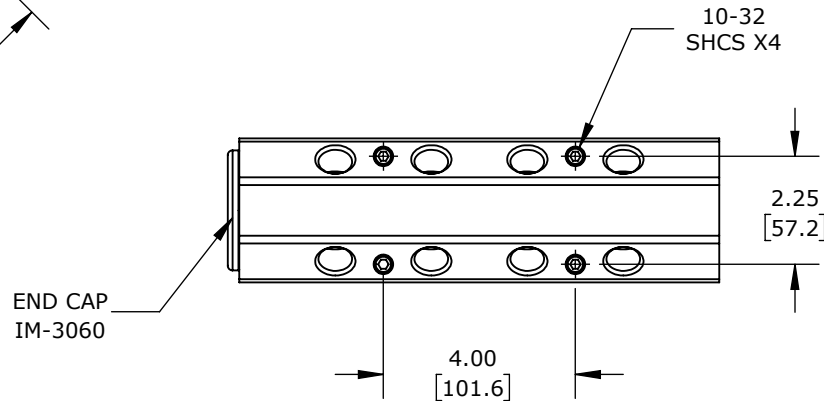


VIEW A-A



BLUE ANODIZED ALUMINUM, RECTANGULAR, 3000 PSI MAXIMUM OPERATING PRESSURE, (4) STATIONS, 1-1/2IN FEMALE NPT INLET(s), 1/2IN FEMALE NPT OUTLET(s), 45-DEG AND 135-DEG ORIENTATION.

CITO AIR, COOLANT, OIL OR WATER MANIFOLD

IM6-10-BD-8-1-2-N-B

AutomationDirect.com
1-800-633-0405

	3rd ANGLE	NOT TO SCALE	PART DIMENSIONS MAY DIFFER SLIGHTLY DUE TO MANUFACTURER'S VARIANCES	INCH UNITS USED FOR PART DESIGN	UNLESS OTHERWISE SPECIFIED UNITS ARE:	inch [mm]	LATEST VERSION 9/18/2024	SHEET 1 OF 1
--	-----------	--------------	---	---------------------------------	---------------------------------------	----------------------------	-----------------------------	--------------