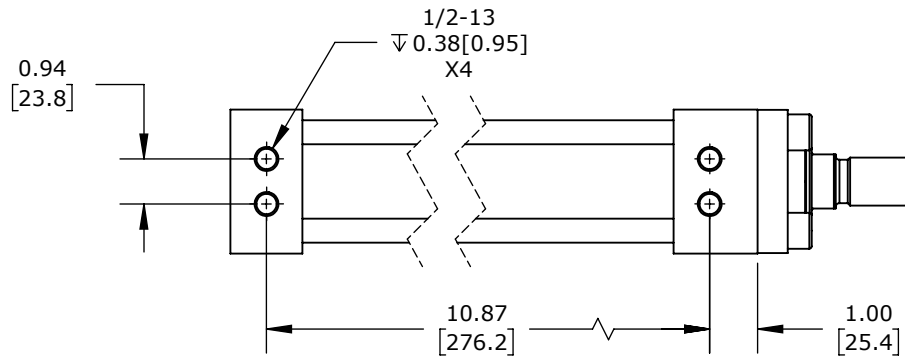
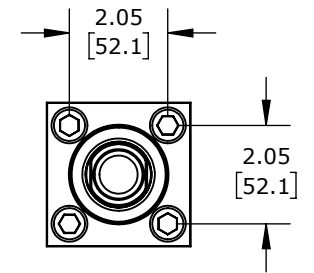
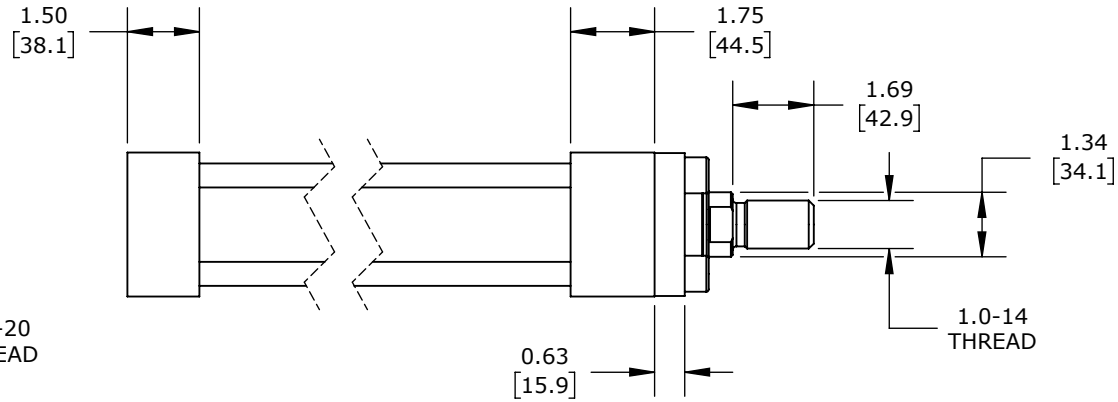
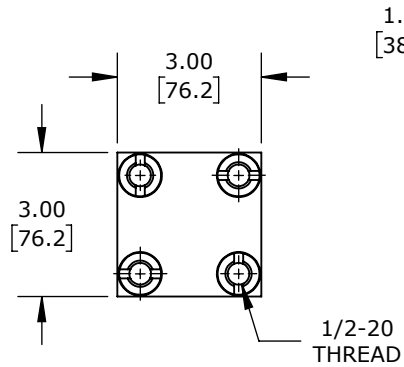
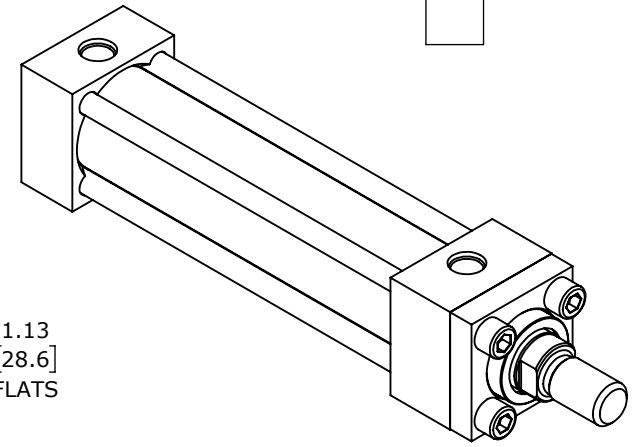
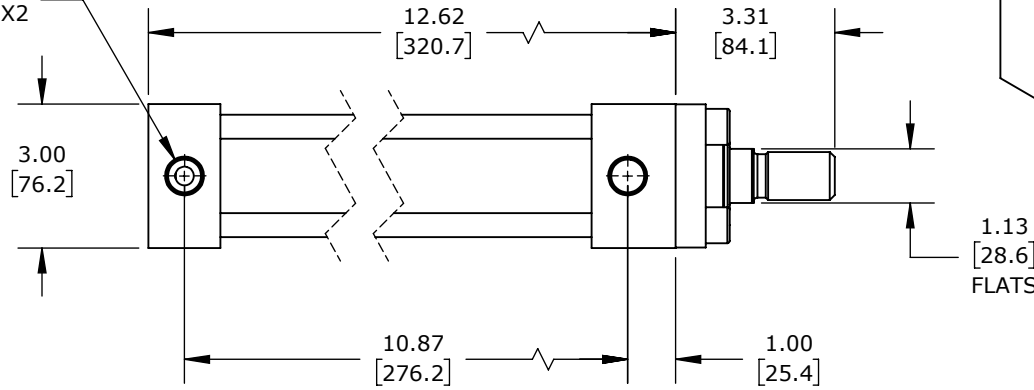


SAE-8  
PORT X2



PORT INFORMATION  
SAE -8 = 3/4-16  
SAE -12 = 1 1/16-12

HYDRAULIC CYLINDER: NFPA, 2IN BORE, 8IN STROKE

HP16200B8S

AutomationDirect.com  
1-800-633-0405



3rd  
ANGLE

NOT TO  
SCALE

PART DIMENSIONS MAY DIFFER SLIGHTLY  
DUE TO MANUFACTURER'S VARIANCES

INCH UNITS USED FOR  
PART DESIGN

UNLESS OTHERWISE  
SPECIFIED UNITS ARE:

inch  
[mm]

LATEST VERSION  
7/20/2022

SHEET 1 OF 1