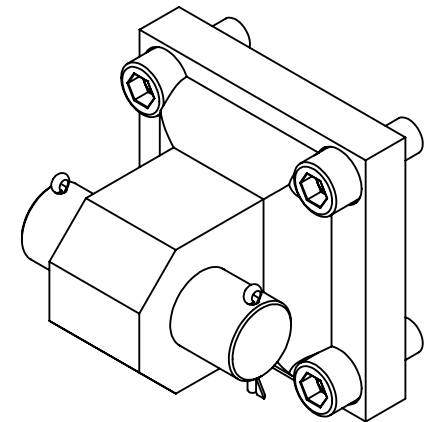
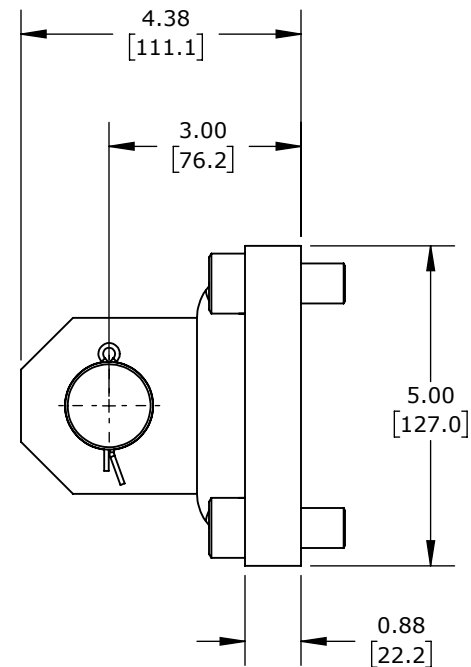
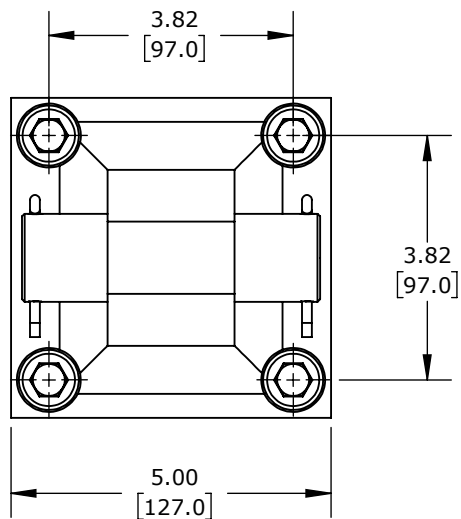
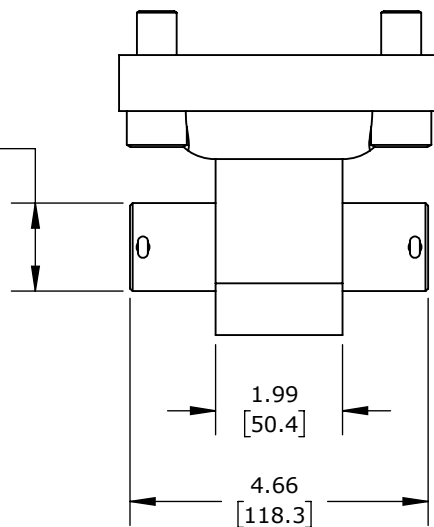


Ø 1.38  
[34.9]



# SPEC NOTES

HARDWARE INCLUDED	QTY
5/8-18 X 1.56" SOCKET HEAD CAP SCREW	4

PENINSULAR REAR PIVOT EYE. FOR 4IN BORE

HM21400-6

AutomationDirect.com  
1-800-633-0405



3rd  
ANGLE

NOT TO  
SCALE

PART DIMENSIONS MAY DIFFER SLIGHTLY  
DUE TO MANUFACTURER'S VARIANCES

INCH UNITS USED FOR  
PART DESIGN

UNLESS OTHERWISE  
SPECIFIED UNITS ARE:

**inch**  
**[mm]**

LATEST VERSION  
7/20/2022

SHEET 1 OF 1