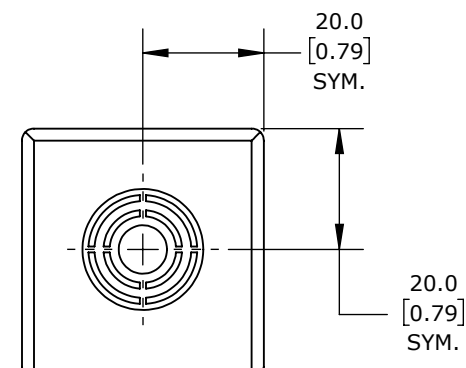
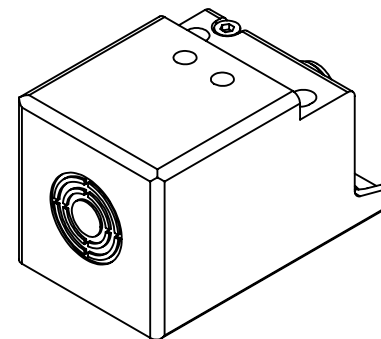


LED



IFM EFECTOR INDUCTIVE PROXIMITY SENSOR, RECTANGULAR, 40 X 40 X 66MM BODY, DIE-CAST ZINC HOUSING, PNP, (2) OSSD, 4-20MM ENABLE ZONE, NON-FLUSH, IP65 IP67, 4-PIN M12 QUICK-DISCONNECT.

GM705S

AutomationDirect.com
1-800-633-0405



3rd
ANGLE

NOT TO
SCALE

PART DIMENSIONS MAY DIFFER SLIGHTLY
DUE TO MANUFACTURER'S VARIANCES

METRIC UNITS USED
FOR PART DESIGN

UNLESS OTHERWISE
SPECIFIED UNITS ARE:

mm
[inch]

LATEST VERSION
2/26/2025

SHEET 1 OF 1