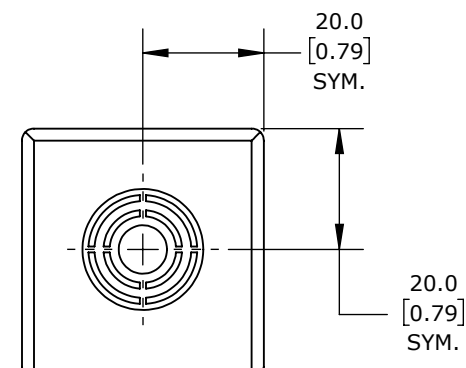
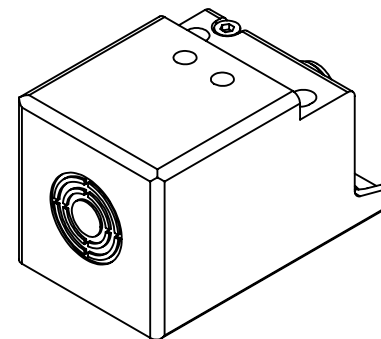


LED



IFM EFECTOR INDUCTIVE PROXIMITY SENSOR, RECTANGULAR, 40 X 40 X 66MM BODY, DIE-CAST ZINC HOUSING, PNP, (2) OSSD, 10-15MM ENABLE ZONE, NON-FLUSH, IP65 IP67, 4-PIN M12 QUICK-DISCONNECT.

**GM701S**

AutomationDirect.com  
1-800-633-0405



3rd  
ANGLE

NOT TO  
SCALE

PART DIMENSIONS MAY DIFFER SLIGHTLY  
DUE TO MANUFACTURER'S VARIANCES

METRIC UNITS USED  
FOR PART DESIGN

UNLESS OTHERWISE  
SPECIFIED UNITS ARE:

**mm**  
[inch]

LATEST VERSION  
2/26/2025

SHEET 1 OF 1