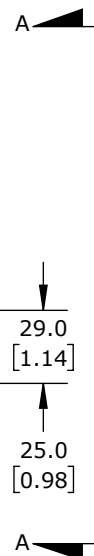
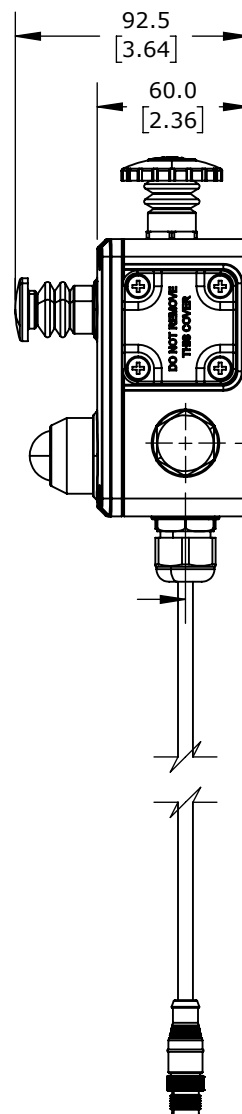
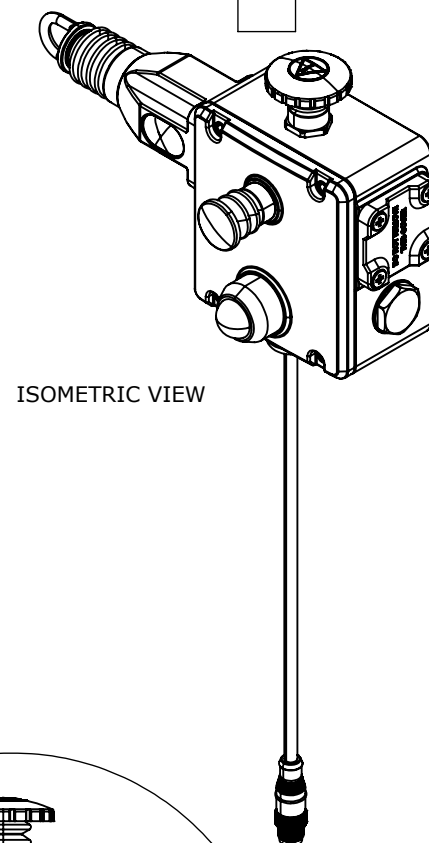


8-PIN M12 QUICK
DISCONNECT



DETAIL A



ISOMETRIC VIEW

IDEM Z-RANGE SAFETY SWITCH, CABLE-PULL INTERLOCK, 125M MAXIMUM PULL CABLE LENGTH, EMERGENCY STOP, RIGHT HAND HEAD, (2) OSSD SAFETY OUTPUT(S), (1) STATUS MONITORING OUTPUT(S), DUAL COLOR LED, DIE-CAST ALUMINUM BODY, 8-PIN M12 QUICK-DISCONNECT.

GLHR-141302-Z

AutomationDirect.com
1-800-633-0405



3rd
ANGLE

NOT TO
SCALE

PART DIMENSIONS MAY DIFFER SLIGHTLY
DUE TO MANUFACTURER'S VARIANCES

METRIC UNITS USED
FOR PART DESIGN

UNLESS OTHERWISE
SPECIFIED UNITS ARE:

mm
[inch]

LATEST VERSION
9/21/2023

SHEET 1 OF 1