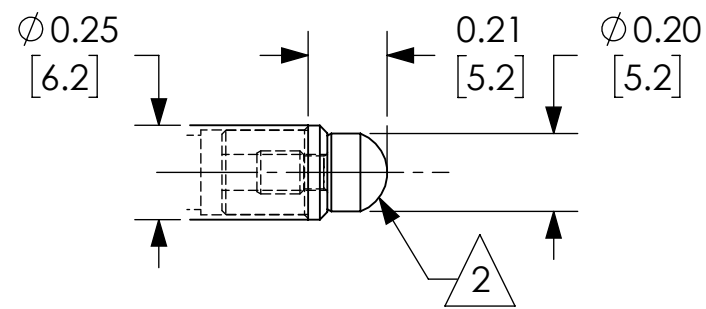


GENERAL NOTES:

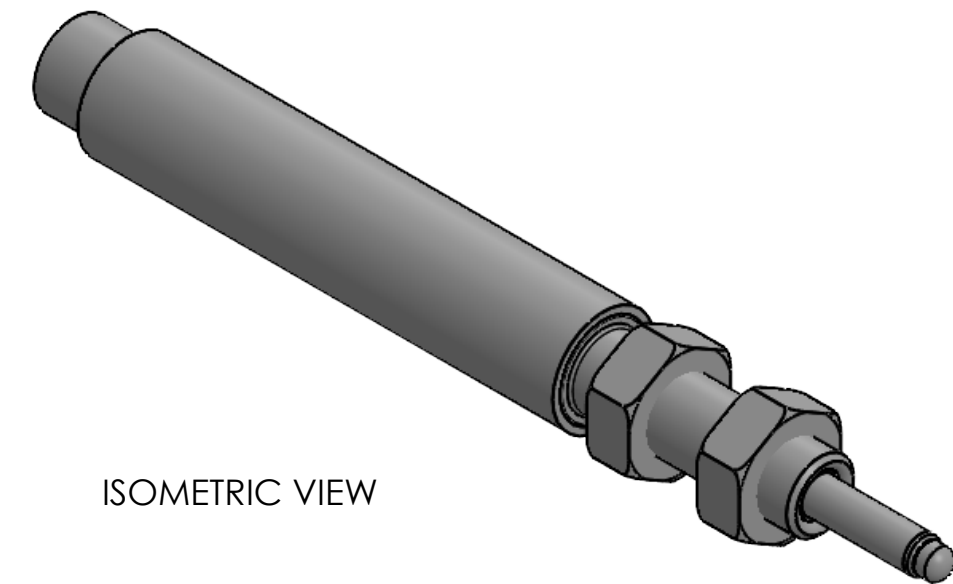
1. ANALOG OUTPUT IS MAXIMUM WITH PROBE RETRACTED; SEE TECHNICAL DATA SHEET TO SPECIFY REVERSED OUTPUT.

2. SENSOR SUPPLIED WITH AGD #9 CONTACT TIP. (4-48 UNF THD)

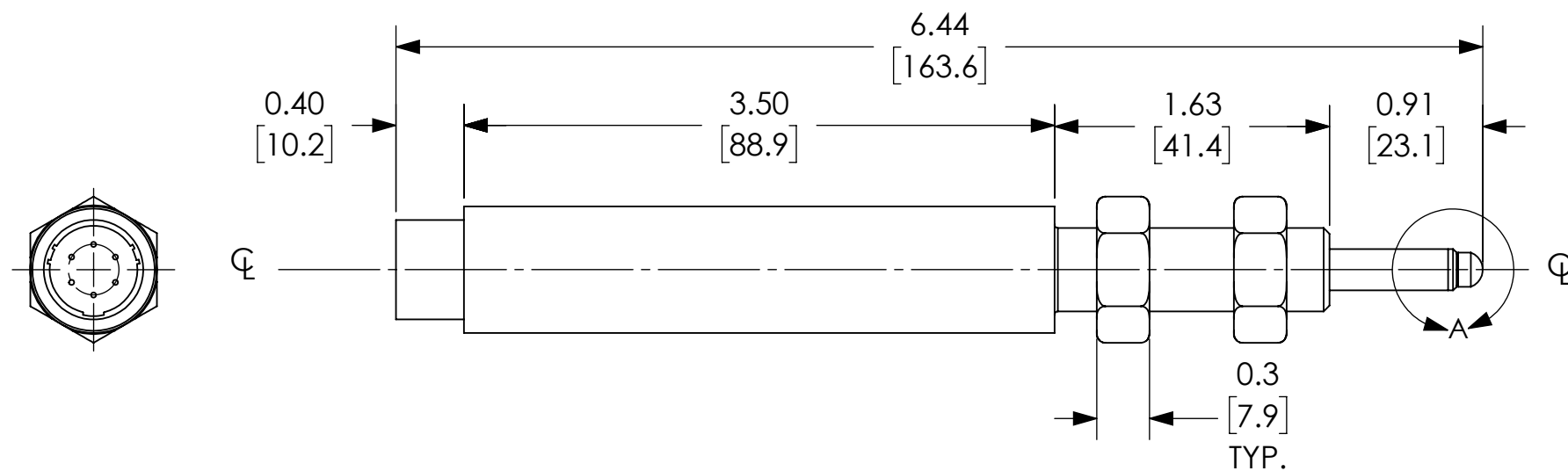
3. SPECIFICATIONS ARE SUBJECT TO CHANGE WITHOUT NOTICE.



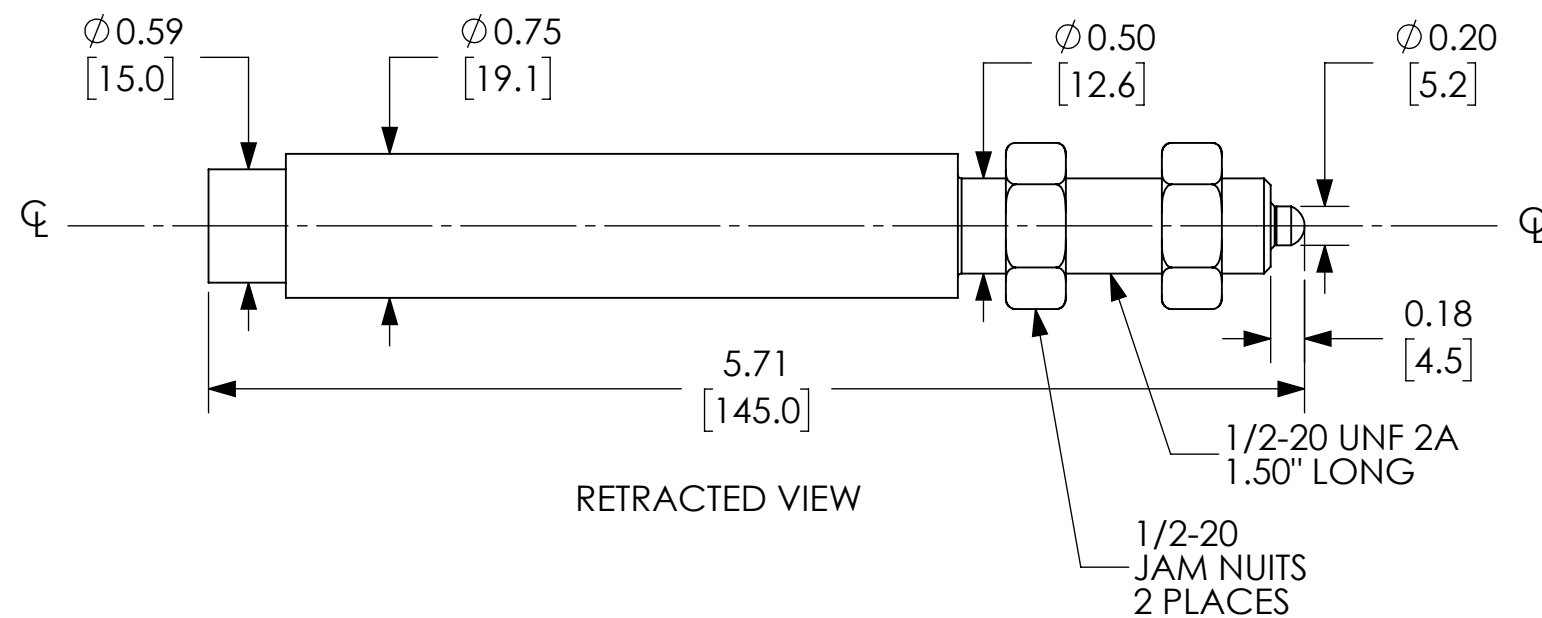
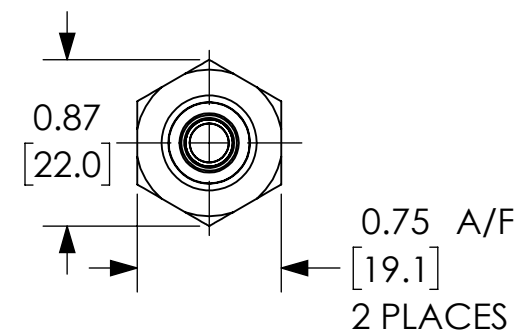
DETAIL A  
SCALE 2:1



ISOMETRIC VIEW



EXTENDED VIEW



RETRACTED VIEW

NOTES:

1. DIMENSIONS CAN BE CHANGED BY MANUFACTURER WITHOUT NOTICE.

2. DIMENSIONS DO NOT IMPLY TOLERANCE.

GHSE19-013A-02-10S

Units: inches [mm]

Scale: Full

LINEAR TRANSDUCER, 3/4" OD SS  
BODY, 1/2" RANGE, SPRING  
LOADED, AXIAL PTO CONNECTOR