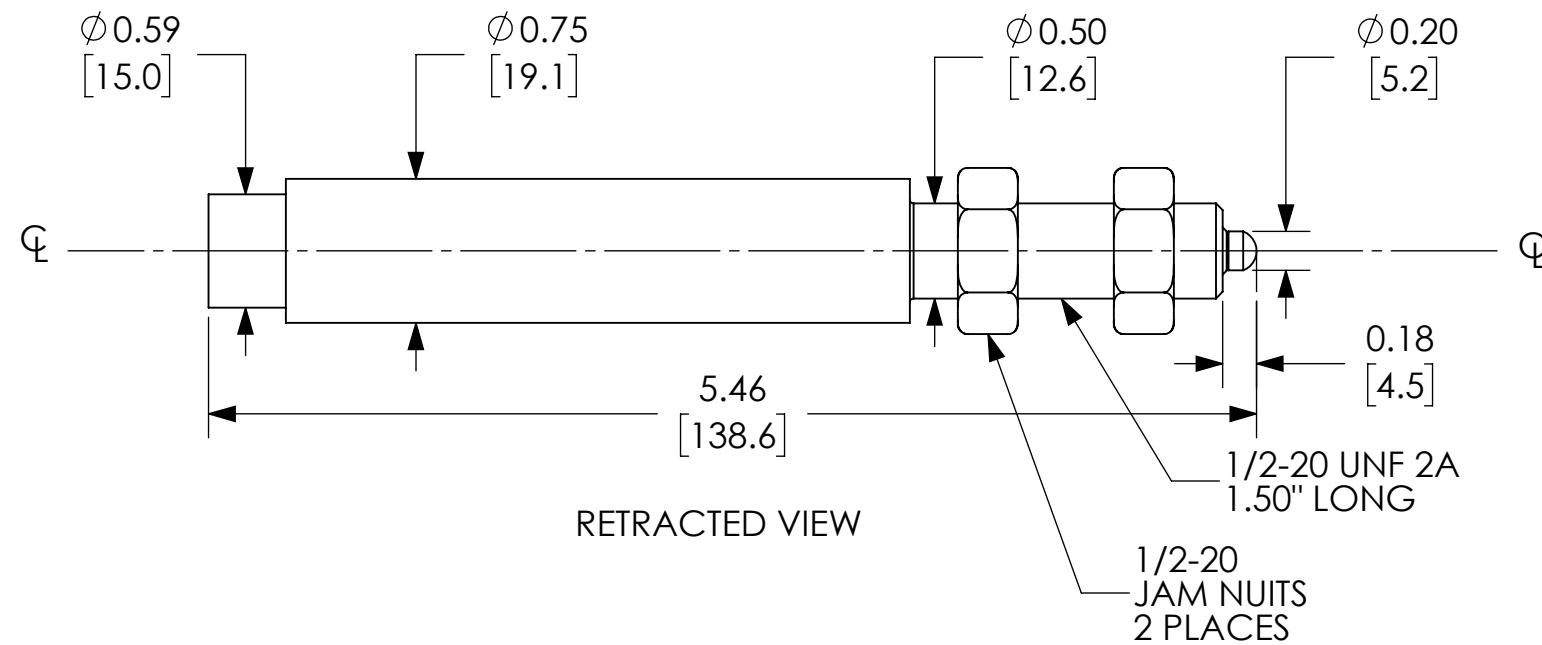
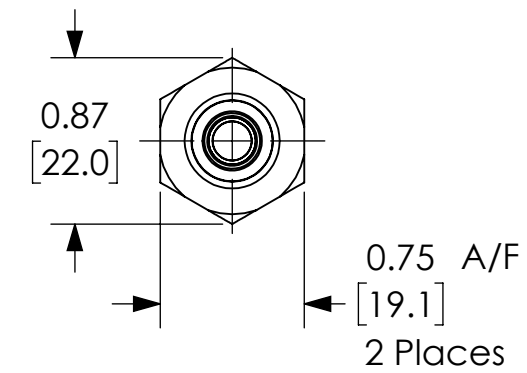
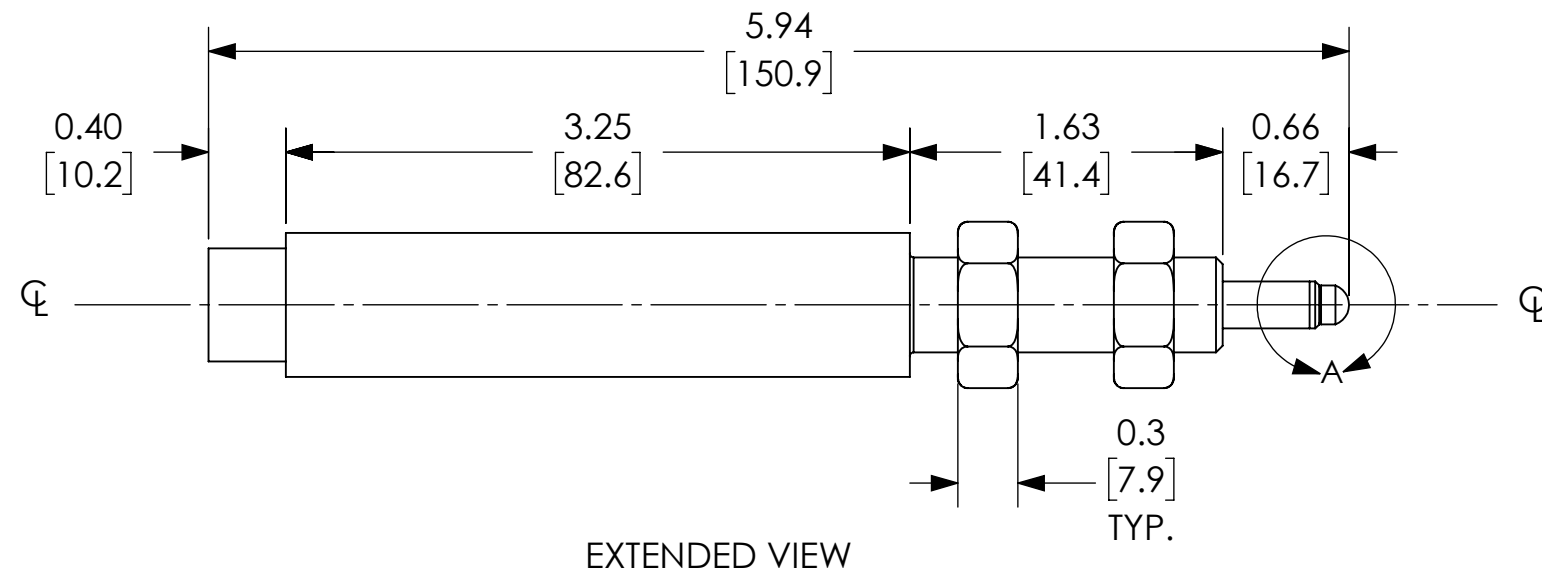
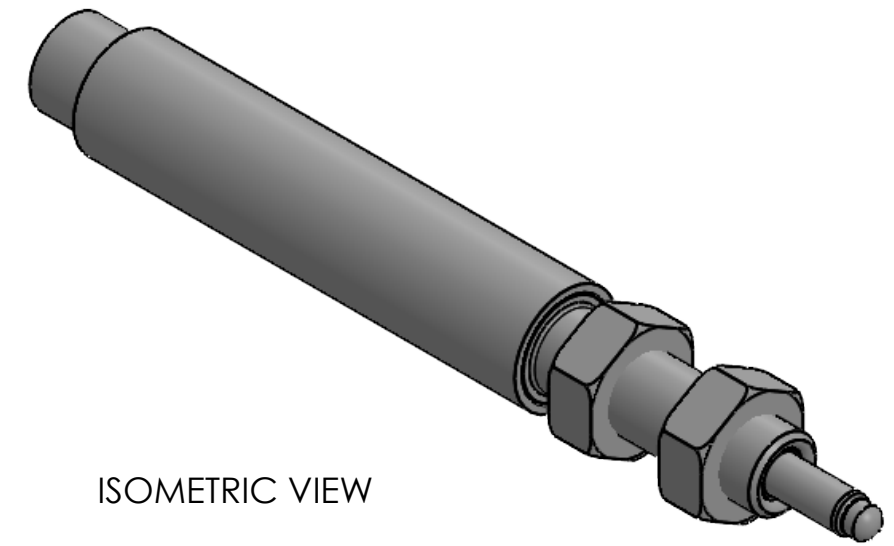
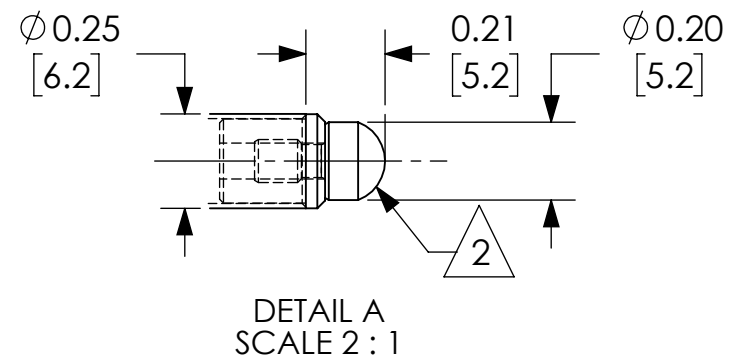


GENERAL NOTES:

1. ANALOG OUTPUT IS MAXIMUM WITH PROBE RETRACTED; SEE TECHNICAL DATA SHEET TO SPECIFY REVERSED OUTPUT.

2. SENSOR SUPPLIED WITH AGD #9 CONTACT TIP. (4-48 UNF THD)

3. SPECIFICATIONS ARE SUBJECT TO CHANGE WITHOUT NOTICE.



NOTES:

1. DIMENSIONS CAN BE CHANGED BY MANUFACTURER WITHOUT NOTICE.

2. DIMENSIONS DO NOT IMPLY TOLERANCE.

GHSE19-006A-02-10S

Units: inches [mm]

Scale: Full

LINEAR TRANSDUCER, 3/4" O.D. SS
BODY, 1/4" RANGE, SPRING
LOADED, AXIAL PTO CONNECTOR