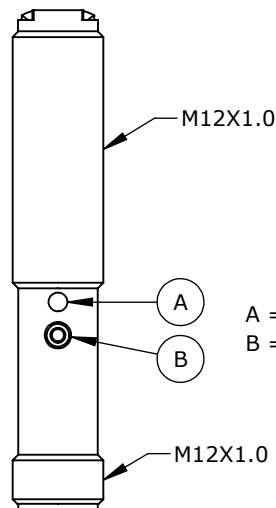
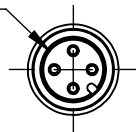
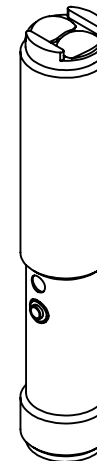


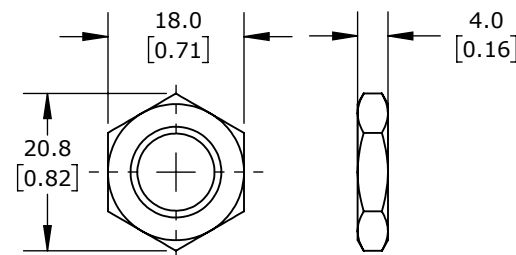
4-PIN
M12 QUICK
DISCONNECT



A = TEACH-IN BUTTON
B = LED



ISOMETRIC VIEW



M12X1.0 HEX NUT
DETAIL VIEW

ACHIEVE PHOTOELECTRIC SENSOR, TUBULAR, THREADED, POLARIZED RETROREFLECTIVE, VISIBLE RED LIGHT EMISSION, 2M SENSING DISTANCE, SELECTABLE LIGHT-ON/DARK-ON, NPN, TEACH-IN BUTTON, 4-WIRE, 4-PIN M12 QUICK-DISCONNECT.

FDMP-0N-1H

AutomationDirect.com
1-800-633-0405



3rd
ANGLE

NOT TO
SCALE

PART DIMENSIONS MAY DIFFER SLIGHTLY
DUE TO MANUFACTURER'S VARIANCES

METRIC UNITS USED
FOR PART DESIGN

UNLESS OTHERWISE
SPECIFIED UNITS ARE:

mm
[inch]

LATEST VERSION
7/31/2024

SHEET 1 OF 1