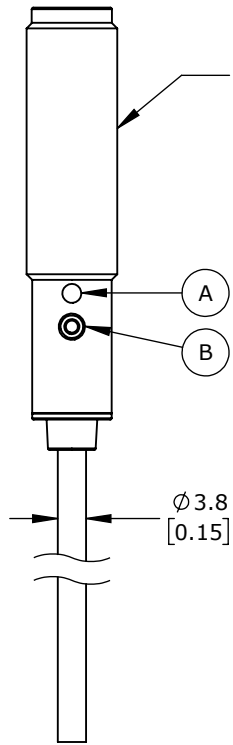
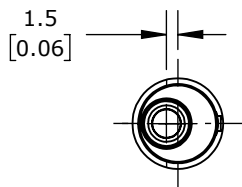
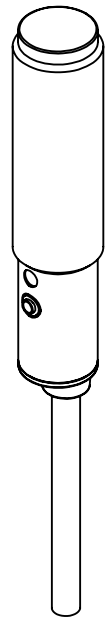


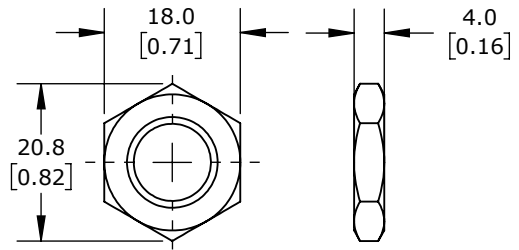
2M
CABLE
LENGTH



A = TEACH-IN BUTTON
B = LED



ISOMETRIC VIEW



M12X1.0 HEX NUT
DETAIL VIEW

ACHIEVE PHOTOELECTRIC SENSOR, TUBULAR, THREADED, DIFFUSE, INFRARED LIGHT EMISSION, 300MM SENSING DISTANCE, SELECTABLE LIGHT-ON/DARK-ON, PNP, TEACH-IN BUTTON, 1 KHZ SWITCHING FREQUENCY, METAL HOUSING, PIGTAIL.

FDM7-0P-1A

AutomationDirect.com
1-800-633-0405

	3rd ANGLE	NOT TO SCALE	PART DIMENSIONS MAY DIFFER SLIGHTLY DUE TO MANUFACTURER'S VARIANCES	METRIC UNITS USED FOR PART DESIGN	UNLESS OTHERWISE SPECIFIED UNITS ARE:	mm [inch]	LATEST VERSION 7/30/2024	SHEET 1 OF 1
--	--------------	-----------------	--	--------------------------------------	--	---------------------	-----------------------------	--------------