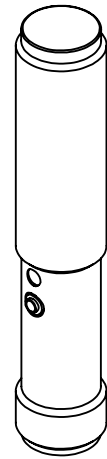
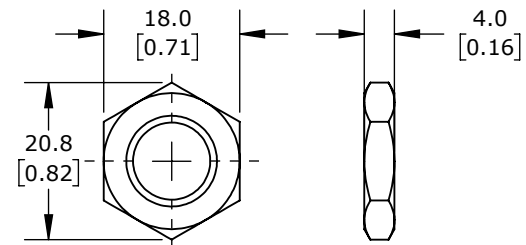


A = TEACH-IN BUTTON
B = LED



ISOMETRIC VIEW



M12X1.0 HEX NUT
DETAIL VIEW

ACHIEVE PHOTOELECTRIC SENSOR, TUBULAR, THREADED, DIFFUSE, INFRARED LIGHT EMISSION, 300MM SENSING DISTANCE, SELECTABLE LIGHT-ON/DARK-ON, NPN, TEACH-IN BUTTON, 1 KHZ SWITCHING FREQUENCY, METAL HOUSING, 4-PIN M12 QUICK-DISCONNECT.

FDM7-0N-1H

AutomationDirect.com
1-800-633-0405



3rd
ANGLE

NOT TO
SCALE

PART DIMENSIONS MAY DIFFER SLIGHTLY
DUE TO MANUFACTURER'S VARIANCES

METRIC UNITS USED
FOR PART DESIGN

UNLESS OTHERWISE
SPECIFIED UNITS ARE:

mm
[inch]

LATEST VERSION
7/31/2024

SHEET 1 OF 1