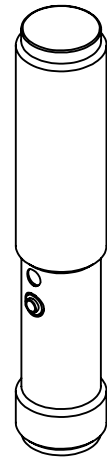
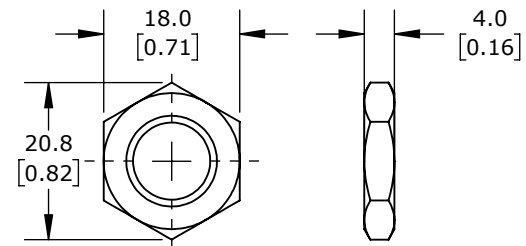


A = TEACH-IN BUTTON  
B = LED



ISOMETRIC VIEW



M12X1.0 HEX NUT  
DETAIL VIEW

ACHIEVE PHOTOELECTRIC SENSOR, TUBULAR, THREADED, DIFFUSE, INFRARED LIGHT EMISSION, 100MM SENSING DISTANCE, SELECTABLE LIGHT-ON/DARK-ON, NPN, TEACH-IN BUTTON, 1 KHZ SWITCHING FREQUENCY, METAL HOUSING, 4-PIN M12 QUICK-DISCONNECT.

**FDM3-0N-1H**

AutomationDirect.com  
1-800-633-0405



3rd  
ANGLE

NOT TO  
SCALE

PART DIMENSIONS MAY DIFFER SLIGHTLY  
DUE TO MANUFACTURER'S VARIANCES

METRIC UNITS USED  
FOR PART DESIGN

UNLESS OTHERWISE  
SPECIFIED UNITS ARE:

**mm**  
[inch]

LATEST VERSION  
7/31/2024

SHEET 1 OF 1