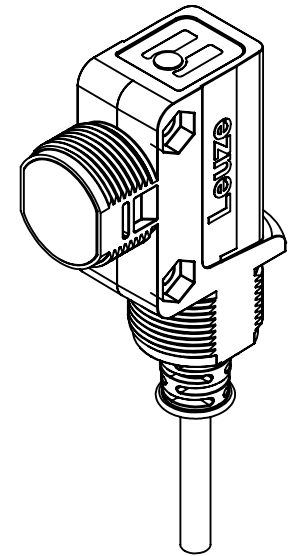
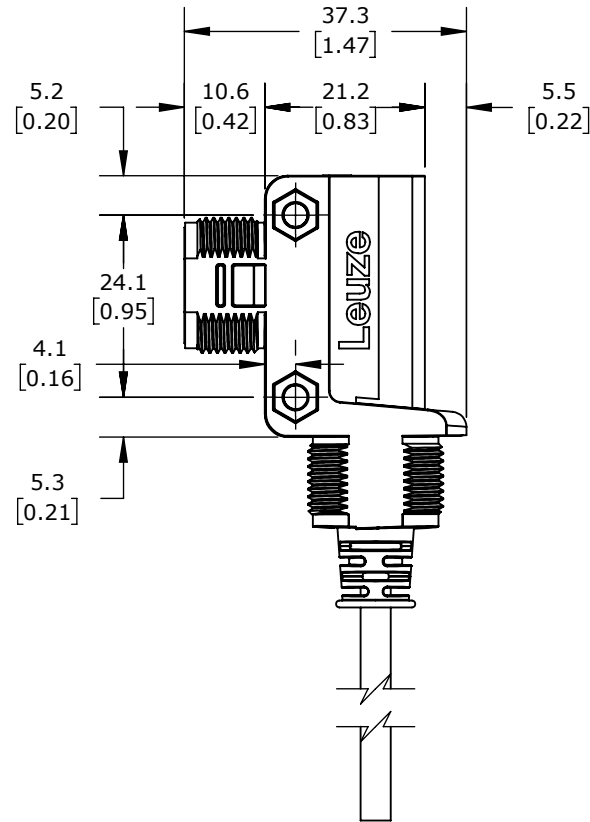
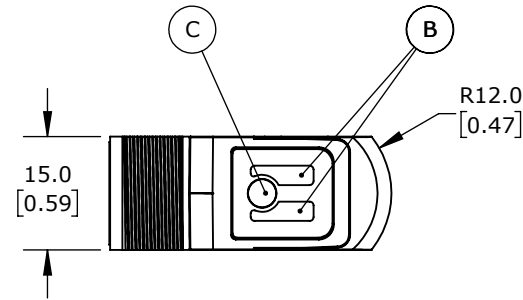
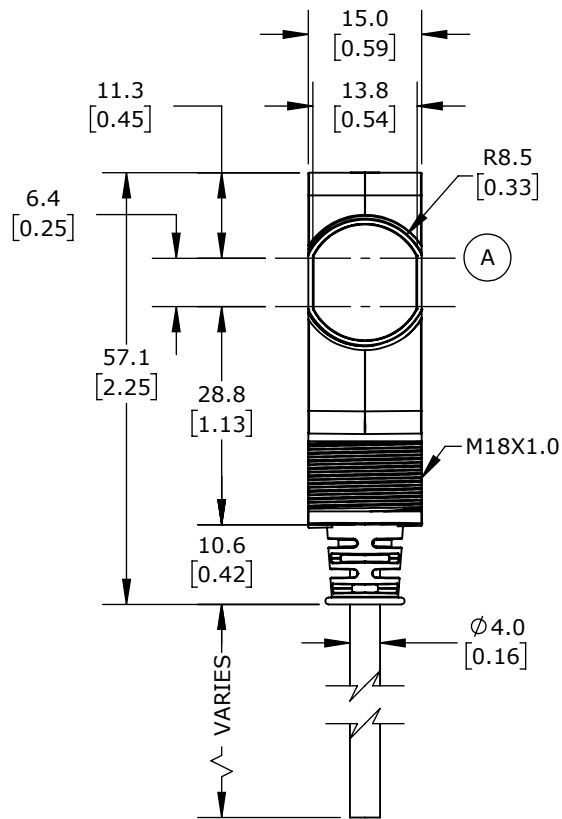


NOTE :

A = OPTICAL AXIS  
B = INDICATOR DIODE  
C = TEACH BUTTON



ISOMETRIC VIEW

LEUZE PHOTOELECTRIC SENSOR, RECTANGULAR, DIFFUSE, VISIBLE RED LIGHT EMISSION, 1-650MM SENSING DISTANCE, COMPLEMENTARY LIGHT-ON/DARK-ON, PNP, TEACH-IN BUTTON, 500 HZ SWITCHING FREQUENCY, ABS PLASTIC HOUSING, PIGTAIL.

ET28.3-4P

AutomationDirect.com  
1-800-633-0405



3rd  
ANGLE

NOT TO  
SCALE

PART DIMENSIONS MAY DIFFER SLIGHTLY  
DUE TO MANUFACTURER'S VARIANCES

METRIC UNITS USED  
FOR PART DESIGN

UNLESS OTHERWISE  
SPECIFIED UNITS ARE:

mm  
[inch]

LATEST VERSION  
2/28/2024

SHEET 1 OF 1