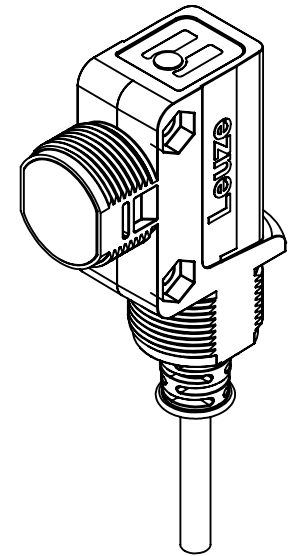
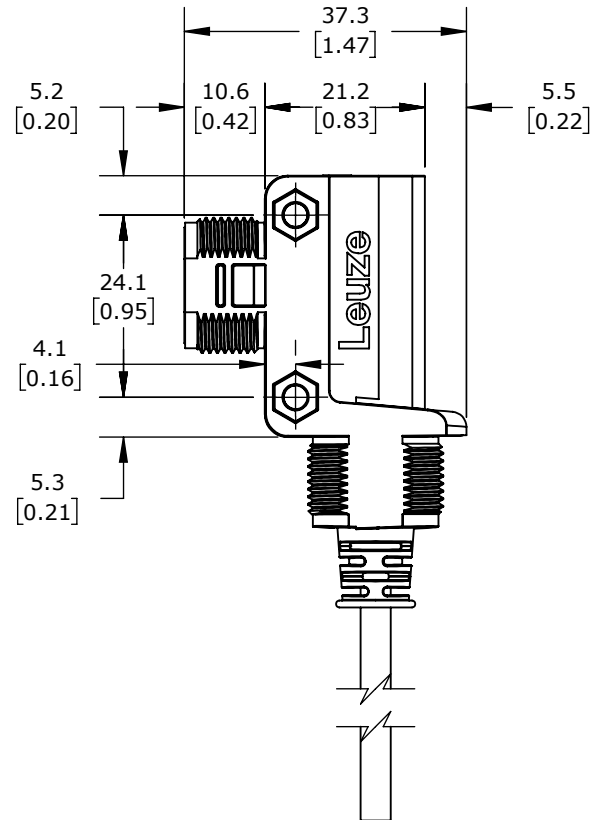
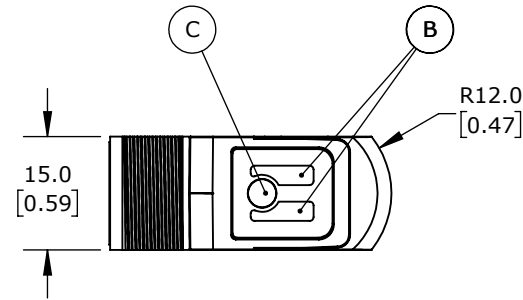
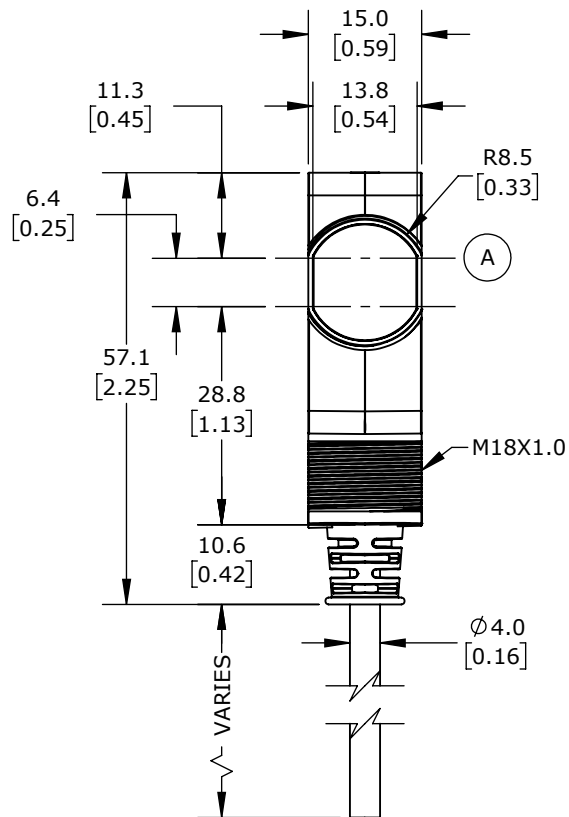


NOTE :

A = OPTICAL AXIS
B = INDICATOR DIODE
C = TEACH BUTTON



ISOMETRIC VIEW

LEUZE PHOTOELECTRIC SENSOR, RECTANGULAR, DIFFUSE, VISIBLE RED LIGHT EMISSION, 1-650MM SENSING DISTANCE, COMPLEMENTARY LIGHT-ON/DARK-ON, NPN, TEACH-IN BUTTON, 500 HZ SWITCHING FREQUENCY, ABS PLASTIC HOUSING, PIGTAIL.

ET28.3-2N

AutomationDirect.com
1-800-633-0405



3rd
ANGLE

NOT TO
SCALE

PART DIMENSIONS MAY DIFFER SLIGHTLY
DUE TO MANUFACTURER'S VARIANCES

METRIC UNITS USED
FOR PART DESIGN

UNLESS OTHERWISE
SPECIFIED UNITS ARE:

mm
[inch]

LATEST VERSION
2/28/2024

SHEET 1 OF 1