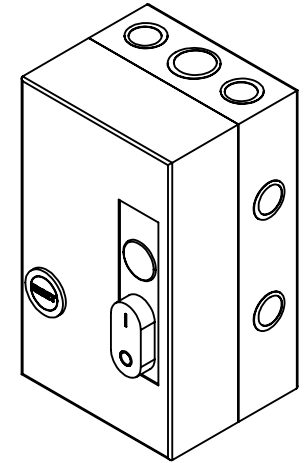
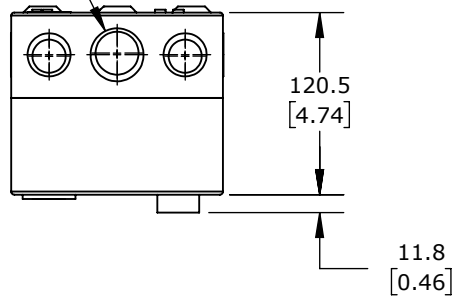
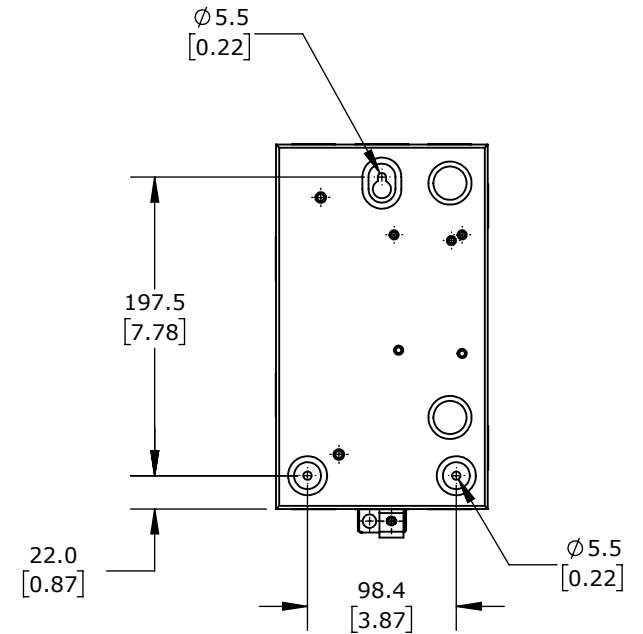
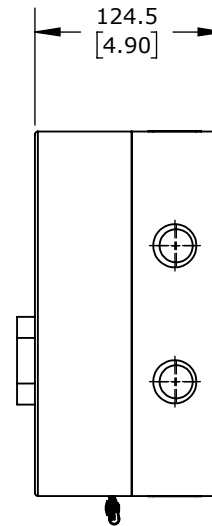
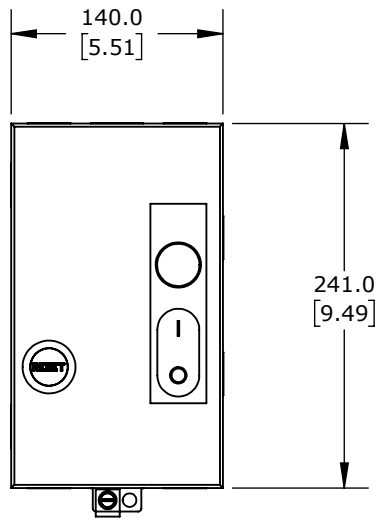
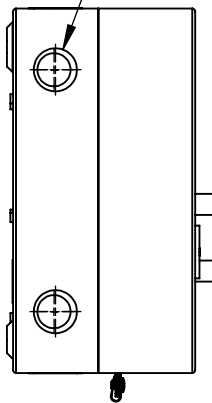


1" - 1.25"  
[35 - 44MM]  
KNOCK OUT  
TOP AND BOTTOM



0.5" - 0.75"  
[22 - 28.5MM]  
KNOCK OUT



12A, 2-POLE, 120 VAC (50/60Hz) COIL VOLTAGE, THERMAL  
OVERLOAD, 8.0-12.5A ADJUSTABLE, NEMA 1.

WEG ELECTRIC EWS MANUAL MOTOR STARTER

ESWS-B12D15A-RM30

AutomationDirect.com  
1-800-633-0405



3rd  
ANGLE

NOT TO  
SCALE

PART DIMENSIONS MAY DIFFER SLIGHTLY  
DUE TO MANUFACTURER'S VARIANCES

METRIC UNITS USED  
FOR PART DESIGN

UNLESS OTHERWISE  
SPECIFIED UNITS ARE:

**mm**  
[inch]

LATEST VERSION  
1/18/2023

SHEET 1 OF 1