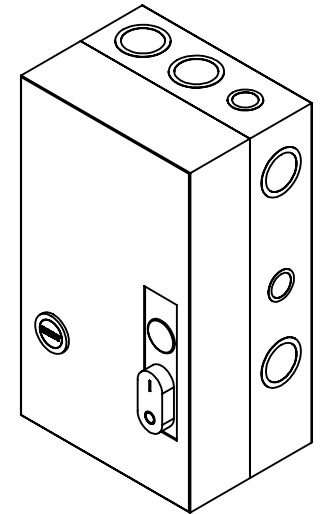
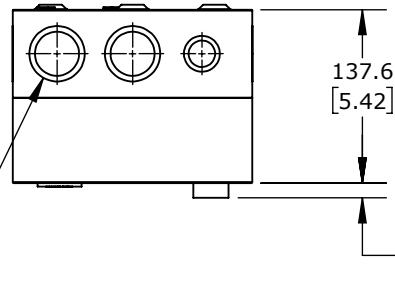
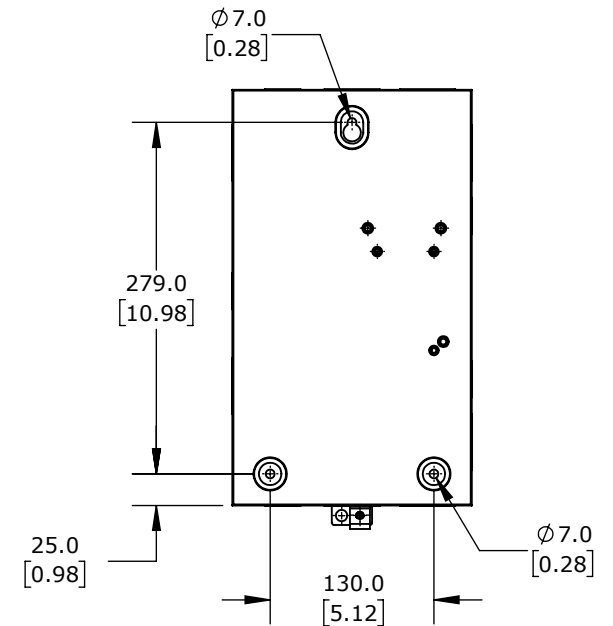
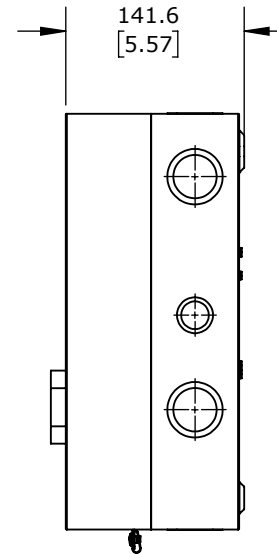
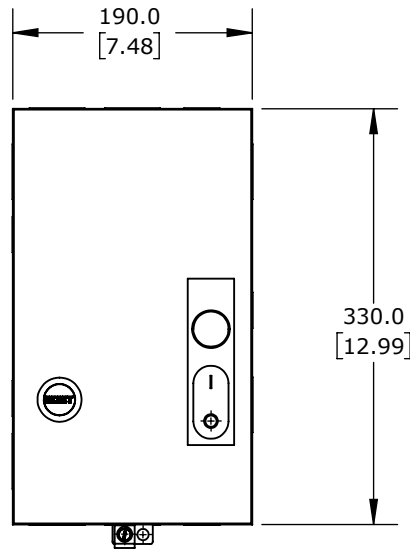
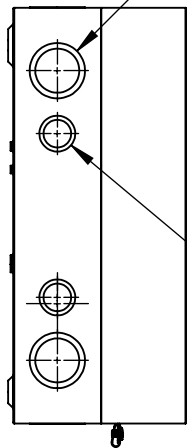


KNOCKOUTS ON TOP
AND BOTTOM



1" - 1.25"
[35 - 44MM]
KNOCK OUT

0.5" - 0.75"
[22 - 28.5MM]
KNOCK OUT



65A, 3-POLE, 208-240 VAC (60Hz)/180-208 VAC (50Hz) COIL
VOLTAGE, THERMAL OVERLOAD, 50.0-63.0A ADJUSTABLE, NEMA 1.

WEG ELECTRIC ESW MANUAL MOTOR STARTER

ESW-B65V24A-R73

AutomationDirect.com
1-800-633-0405



3rd
ANGLE

NOT TO
SCALE

PART DIMENSIONS MAY DIFFER SLIGHTLY
DUE TO MANUFACTURER'S VARIANCES

METRIC UNITS USED
FOR PART DESIGN

UNLESS OTHERWISE
SPECIFIED UNITS ARE:

mm
[inch]

LATEST VERSION
1/18/2023

SHEET 1 OF 1