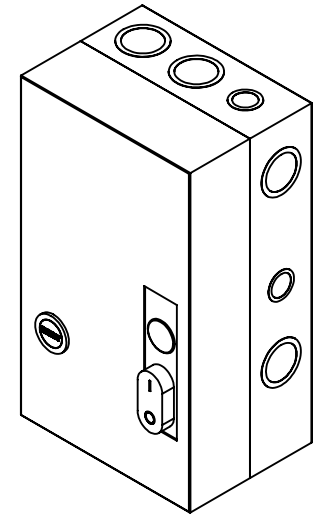
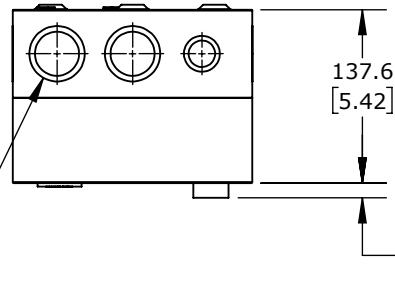
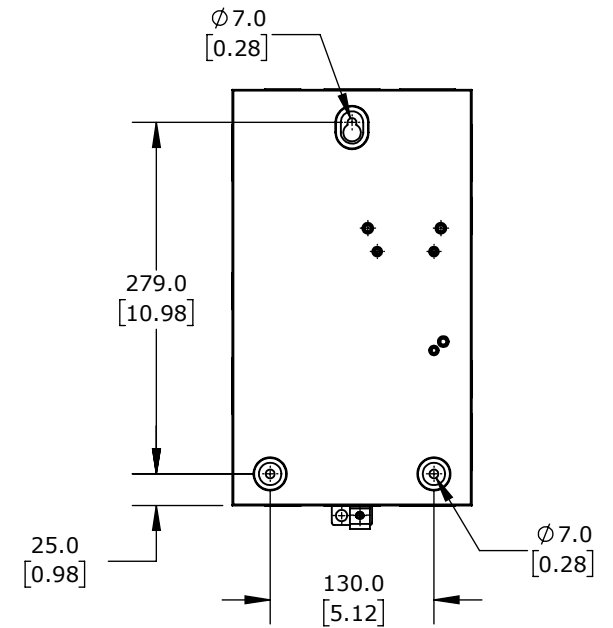
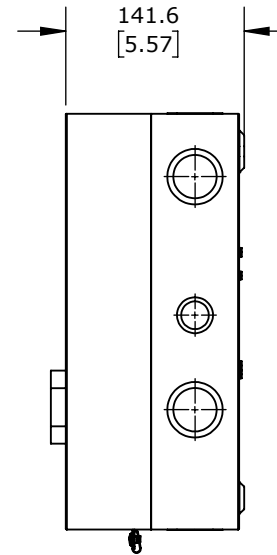
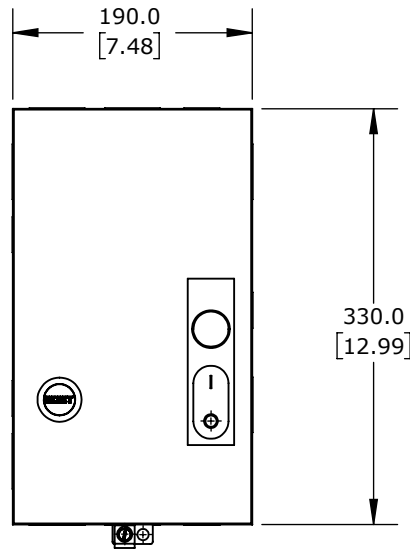
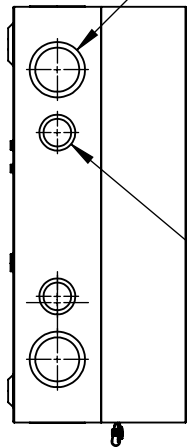


KNOCKOUTS ON TOP  
AND BOTTOM



1" - 1.25"  
[35 - 44MM]  
KNOCK OUT

0.5" - 0.75"  
[22 - 28.5MM]  
KNOCK OUT



PUSHBUTTON, 40A, 3-POLE, 120 VAC (50/60Hz) COIL VOLTAGE,  
THERMAL OVERLOAD, 25.0-40.0A ADJUSTABLE, NEMA 1.

WEG ELECTRIC ESW MANUAL MOTOR STARTER

ESW-B40D15A-R70

AutomationDirect.com  
1-800-633-0405



3rd  
ANGLE

NOT TO  
SCALE

PART DIMENSIONS MAY DIFFER SLIGHTLY  
DUE TO MANUFACTURER'S VARIANCES

METRIC UNITS USED  
FOR PART DESIGN

UNLESS OTHERWISE  
SPECIFIED UNITS ARE:

**mm**  
**[inch]**

LATEST VERSION  
1/18/2023

SHEET 1 OF 1