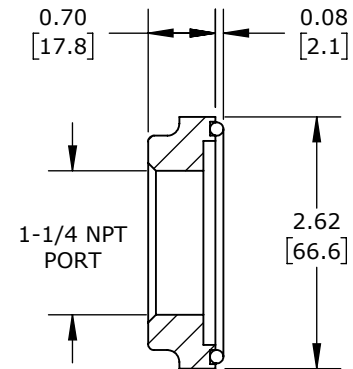
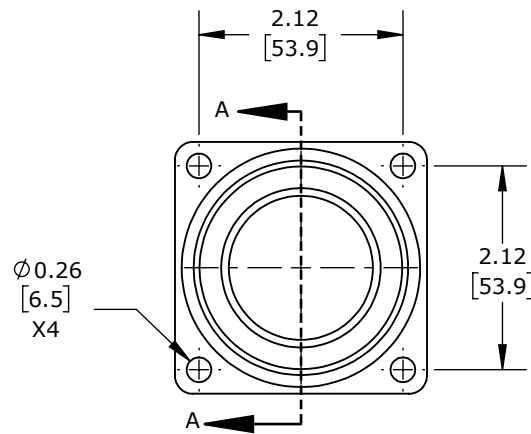
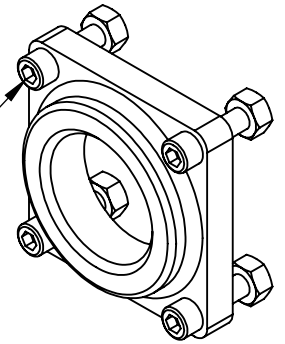


(4) 1/4-20X1 SHCS, (4)
1/4-20 NUTS AND O-RING



SECTION A-A

1-1/4IN FEMALE NPT. FOR USE WITH CITO STACKFLOW VALVES
BODY INLET. BK-9100 BOLT KIT INCLUDED.

CITO PORT ADAPTER

EC-3101-K

AutomationDirect.com
1-800-633-0405



3rd
ANGLE

NOT TO
SCALE

PART DIMENSIONS MAY DIFFER SLIGHTLY
DUE TO MANUFACTURER'S VARIANCES

INCH UNITS USED FOR
PART DESIGN

UNLESS OTHERWISE
SPECIFIED UNITS ARE:

inch
[mm]

LATEST VERSION
9/18/2024

SHEET 1 OF 1