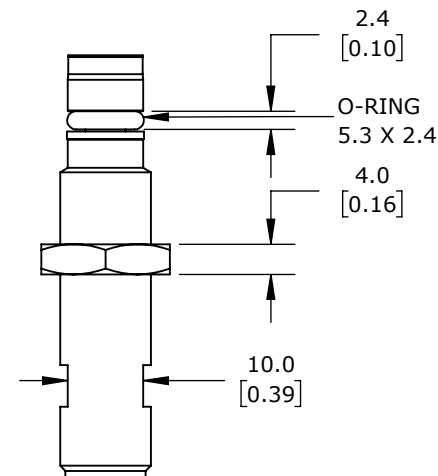
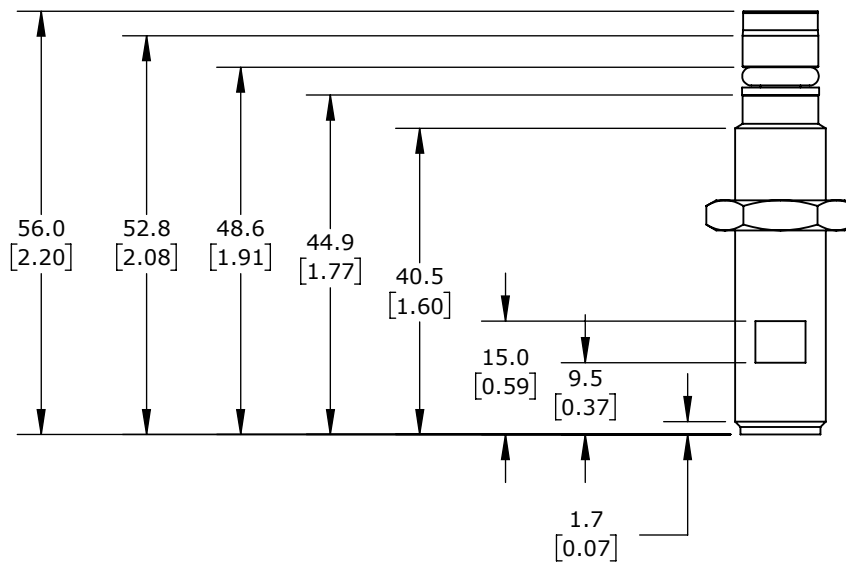


ISOMETRIC VIEW



CONTRINEX INDUCTIVE PROXIMITY SENSOR, TUBULAR, 12MM DIAMETER X 56MM BODY, 304 STAINLESS STEEL HOUSING, PNP, N.O., 1.5MM SENSING DISTANCE, FLUSH, 600 HZ SWITCHING FREQUENCY, IP68, 4-PIN M12 QUICK-DISCONNECT.

DW-AS-503-P12-624

AutomationDirect.com
1-800-633-0405



3rd
ANGLE

NOT TO
SCALE

PART DIMENSIONS MAY DIFFER SLIGHTLY
DUE TO MANUFACTURER'S VARIANCES

METRIC UNITS USED
FOR PART DESIGN

UNLESS OTHERWISE
SPECIFIED UNITS ARE:

mm
[inch]

LATEST VERSION
9/27/2022

SHEET 1 OF 1