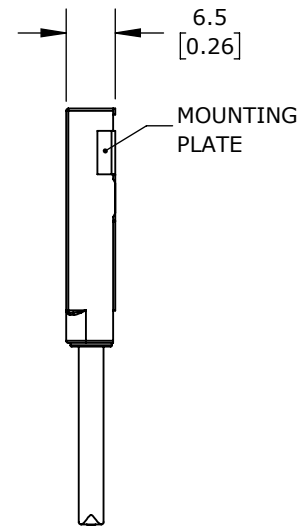
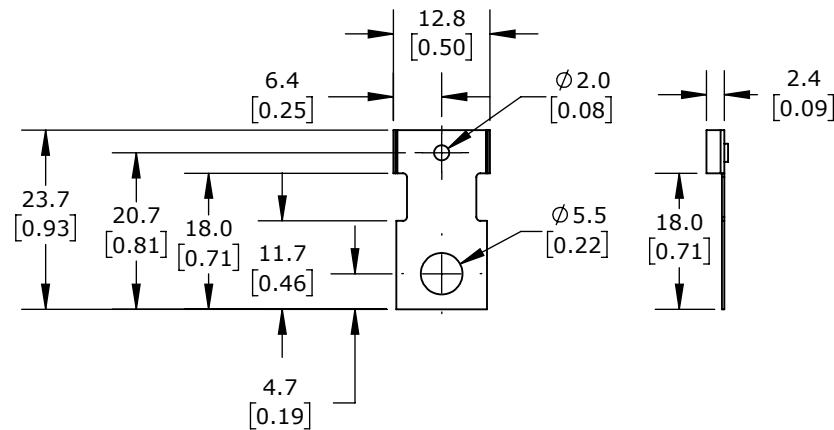


SENSOR DETAIL



ISOMETRIC VIEW



MOUNTING PLATE DETAIL

CONTRINEX INDUCTIVE PROXIMITY SENSOR, RECTANGULAR, 12 X 27 X 7MM BODY, POLYCARBONATE HOUSING, TOP SENSING, PNP, N.O. OUTPUT, 4MM SENSING DISTANCE, NON-FLUSH, 2000 HZ SWITCHING FREQUENCY, IP67, PIGTAIL.

DW-AD-613-C12P

AutomationDirect.com
1-800-633-0405



3rd
ANGLE

NOT TO
SCALE

PART DIMENSIONS MAY DIFFER SLIGHTLY
DUE TO MANUFACTURER'S VARIANCES

METRIC UNITS USED
FOR PART DESIGN

UNLESS OTHERWISE
SPECIFIED UNITS ARE:

mm
[inch]

LATEST VERSION
1/12/2023

SHEET 1 OF 1