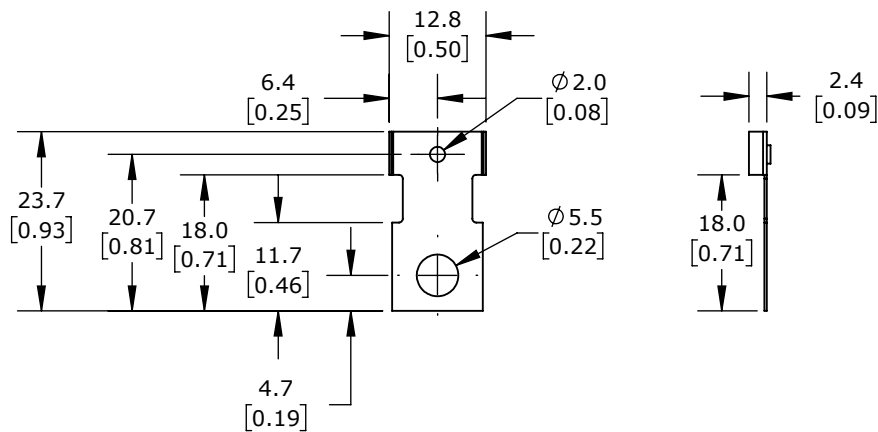


SENSOR DETAIL



MOUNTING PLATE DETAIL

CONTRINEX INDUCTIVE PROXIMITY SENSOR, RECTANGULAR, 12 X 27 X 12MM BODY, POLYCARBONATE HOUSING, FRONT SENSING, PNP, N.O. OUTPUT, 4MM SENSING DISTANCE, NON-FLUSH, 2000 HZ SWITCHING FREQUENCY, IP67, PIGTAIL.

**DW-AD-613-C12P-1523**

AutomationDirect.com  
1-800-633-0405



3rd  
ANGLE

NOT TO  
SCALE

PART DIMENSIONS MAY DIFFER SLIGHTLY  
DUE TO MANUFACTURER'S VARIANCES

METRIC UNITS USED  
FOR PART DESIGN

UNLESS OTHERWISE  
SPECIFIED UNITS ARE:

**mm**  
[inch]

LATEST VERSION  
1/12/2023

SHEET 1 OF 1