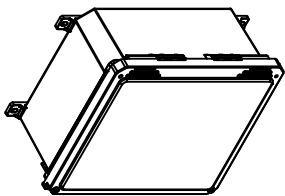
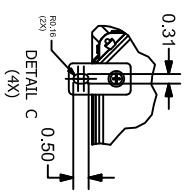
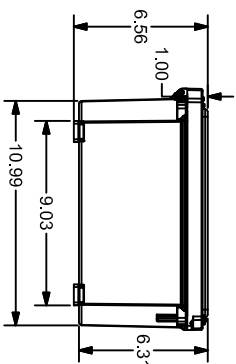
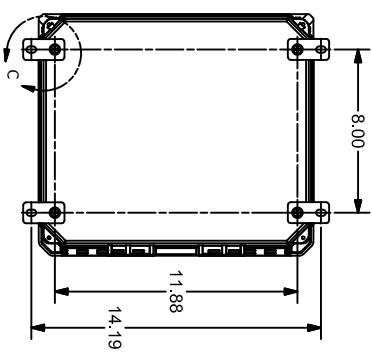
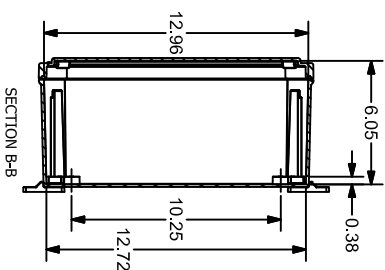
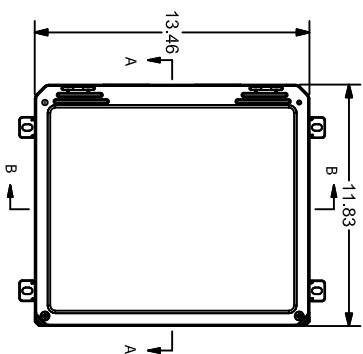
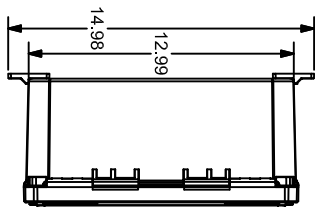


FOR REFERENCE ONLY
MOUNTING FEET SHOWN AS INSTALLED



STAHLIN DIAMOND SHIELD SERIES ENCLOSURE, NEMA 1/3/3S/4X/12/13, 12 X 10 X 6IN (HXWxD), WALL MOUNT, FIBERGLASS REINFORCED POLYESTER, GRAY, CROWNED HINGED SCREW COVER.

DS121006HW

AutomationDirect.com
1-800-633-0405



3rd ANGLE NOT TO SCALE PART DIMENSIONS MAY DIFFER SLIGHTLY DUE TO MANUFACTURER'S VARIANCES

METRIC UNITS USED FOR PART DESIGN

UNLESS OTHERWISE SPECIFIED UNITS ARE:

inch [mm]

LATEST VERSION 1/27/2023

SHEET 1 OF 1