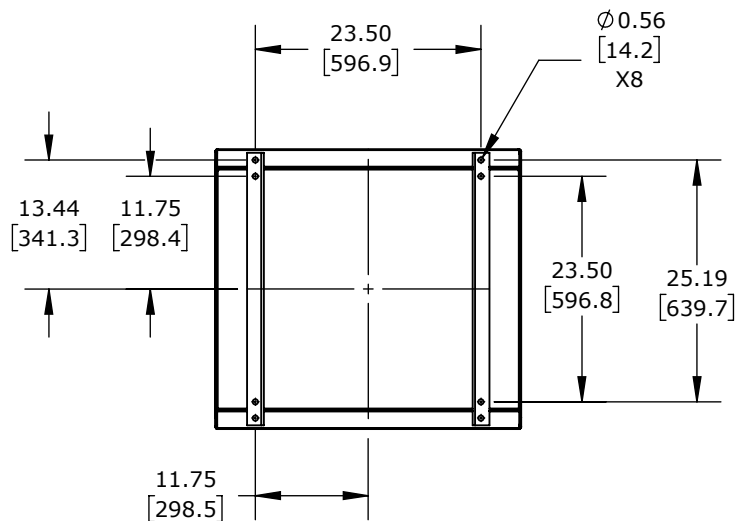
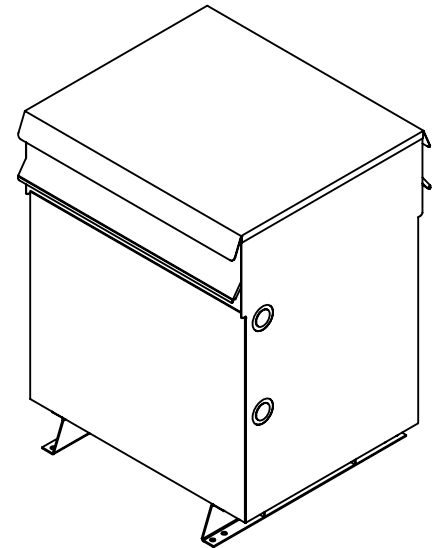


Ø 2.00
[50.8]
X4



POWER RATING	220 KVA
PRIMARY VOLTAGE	460 Δ
SEC, VOLTAGE	460Y / 266
NUMBER OF PHASES	3

HAMMOND DRIVE ISOLATION TRANSFORMER

DM220JJ

AutomationDirect.com
1-800-633-0405



3rd
ANGLE

NOT TO
SCALE

PART DIMENSIONS MAY DIFFER SLIGHTLY
DUE TO MANUFACTURER'S VARIANCES

INCH UNITS USED FOR
PART DESIGN

UNLESS OTHERWISE
SPECIFIED UNITS ARE:

inch
[mm]

LATEST VERSION
2/1/2022

SHEET 1 OF 1