

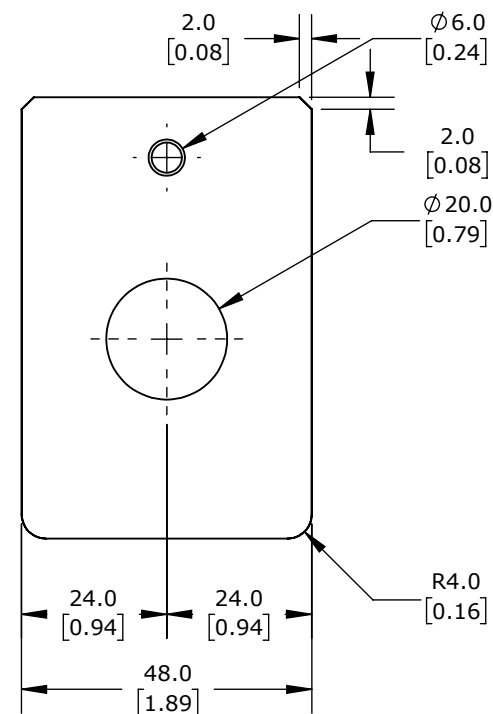
Technical drawing of a mechanical part, showing front and side views with dimensions in millimeters (mm) and inches (in).

Front View Dimensions:

- Overall width: 48.0 mm [1.89]
- Overall height: 73.0 mm [2.87]
- Top section height: 40.0 mm [1.57]
- Bottom section height: 33.0 mm [1.30]
- Top section width (left): 24.0 mm [0.94]
- Top section width (right): 24.0 mm [0.94]
- Central circular feature: $\varnothing 20.0$ [0.79] THRU ALL

Side View Dimensions:

- Top flange width: 7.0 mm [0.28]
- Top flange thickness: 34.0 mm [1.34]
- Bottom flange width: 6.0 mm [0.24]



DD52RE-SST-IP67

AutomationDirect.com
1-800-633-0405



3rd
ANGLE

NOT TO
SCALE

PART DIMENSIONS MAY DIFFER SLIGHTLY
DUE TO MANUFACTURER'S VARIANCES

METRIC UNITS USED
FOR PART DESIGN

UNLESS OTHERWISE
SPECIFIED UNITS ARE:

mm
[inch]

LATEST VERSION
5/23/2023

SHEET 1 OF 1