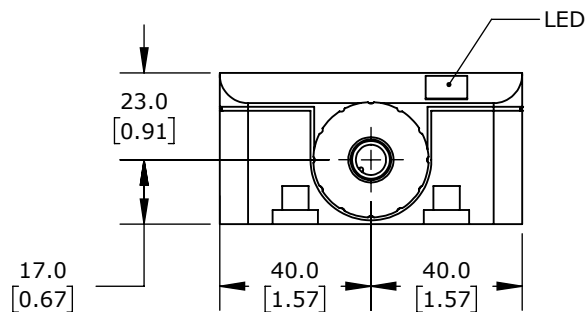


ISOMETRIC VIEW



PROSENSE INDUCTIVE PROXIMITY SENSOR, RECTANGULAR, 80 X 40 X 92MM BODY, POLYPHENYLENE ETHER HOUSING, PNP, N.O.  
OUTPUT, 50MM SENSING DISTANCE, FLUSH, 70 HZ SWITCHING FREQUENCY, IP67, 4-PIN M12 QUICK-DISCONNECT.

**D80-AP-3H**

AutomationDirect.com  
1-800-633-0405



3rd  
ANGLE

NOT TO  
SCALE

PART DIMENSIONS MAY DIFFER SLIGHTLY  
DUE TO MANUFACTURER'S VARIANCES

METRIC UNITS USED  
FOR PART DESIGN

UNLESS OTHERWISE  
SPECIFIED UNITS ARE:

**mm**  
[inch]

LATEST VERSION  
2/28/2023

SHEET 1 OF 1