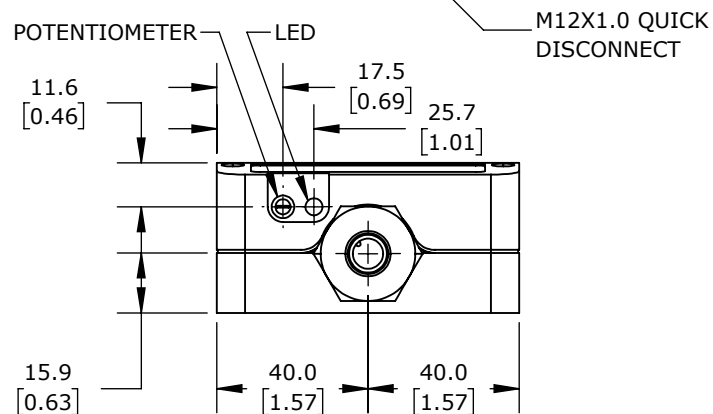


ISOMETRIC VIEW



PROSENSE INDUCTIVE PROXIMITY SENSOR, RECTANGULAR, 80 X 40 X 105MM BODY, POLYPHENYLENE ETHER HOUSING, PNP, N.O./N.C. SELECTABLE OUTPUT, 20-60MM SENSING DISTANCE, NON-FLUSH, 100 HZ SWITCHING FREQUENCY, IP67, 4-PIN M12 QUICK-DISCONNECT.

D80-0P-4H

AutomationDirect.com
1-800-633-0405



3rd
ANGLE

NOT TO
SCALE

PART DIMENSIONS MAY DIFFER SLIGHTLY
DUE TO MANUFACTURER'S VARIANCES

METRIC UNITS USED
FOR PART DESIGN

UNLESS OTHERWISE
SPECIFIED UNITS ARE:

mm
[inch]

LATEST VERSION
2/28/2023

SHEET 1 OF 1