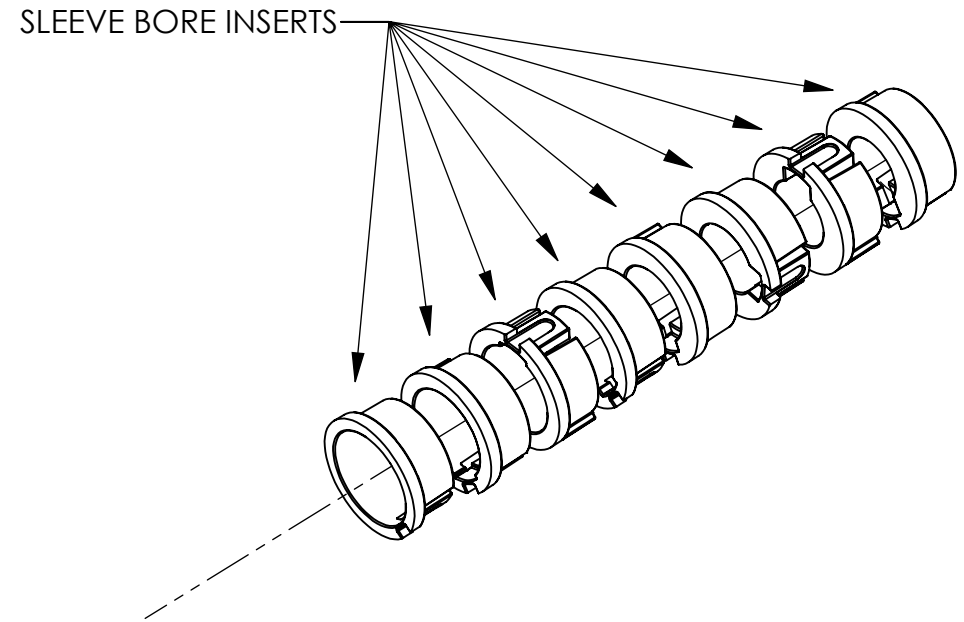
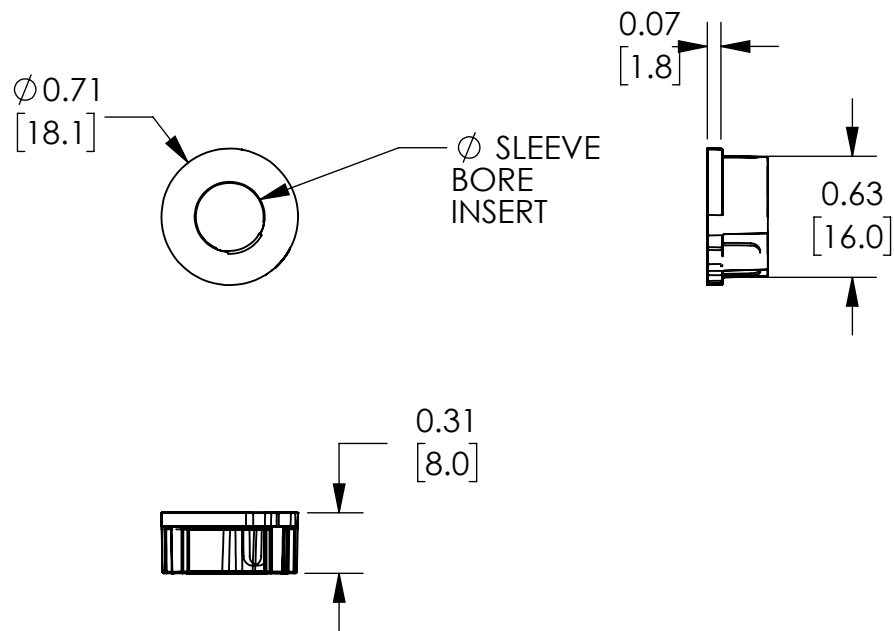


NOTE:
SELECT AND INSTALL DESIRED SLEEVE BORE INSERT
9mm, 3/8in, 10mm, 11mm, 12mm, 1/2in, 13mm, 14mm



NOTES:

1. DIMENSIONS CAN BE CHANGED BY MANUFACTURER WITHOUT NOTICE.
2. DIMENSIONS DO NOT IMPLY TOLERANCE.

CUI-KIT-4

Units: inches [mm]

Scale: Full

CUI SLEEVE KIT, REPLACEMENT,
FOR USE WITH CUI AMT-13 AND
AMT-33 ENCODERS, INCLUDES (8)
SLEEVES 9-14mm

AUTOMATIONDIRECT.com