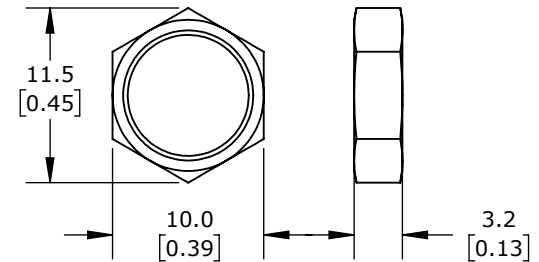


ISOMETRIC VIEW



M8X0.75 HEX NUT
(2 REQUIRED)

METROL LIMIT SWITCH, PRECISION TOUCH, 6MM DIAMETER, THREADED, 0.75MM PITCH, 42MM LENGTH, 1.5MM RADIUS HEAD, 2MM PLUNGER, 1N CONTACT FORCE, N.O. CONTACT(S), 9.8FT/3M CABLE LENGTH, PIGTAIL.				CS067A			AutomationDirect.com 1-800-633-0405	
	3rd ANGLE	NOT TO SCALE	PART DIMENSIONS MAY DIFFER SLIGHTLY DUE TO MANUFACTURER'S VARIANCES	METRIC UNITS USED FOR PART DESIGN	UNLESS OTHERWISE SPECIFIED UNITS ARE:	mm [inch]	LATEST VERSION 7/16/2024	SHEET 1 OF 1